

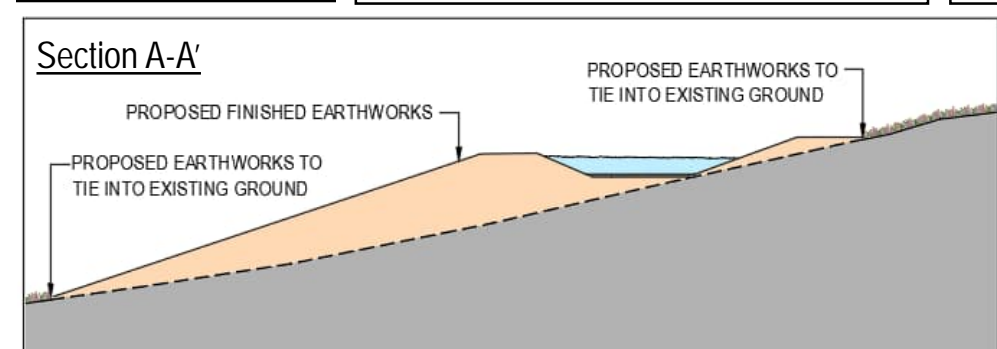
NENTHEAD MWTS - EARTHWORKS CONSTRUCTION SUMMARY

LOCATION OF FINISHED TREATMENT PONDS



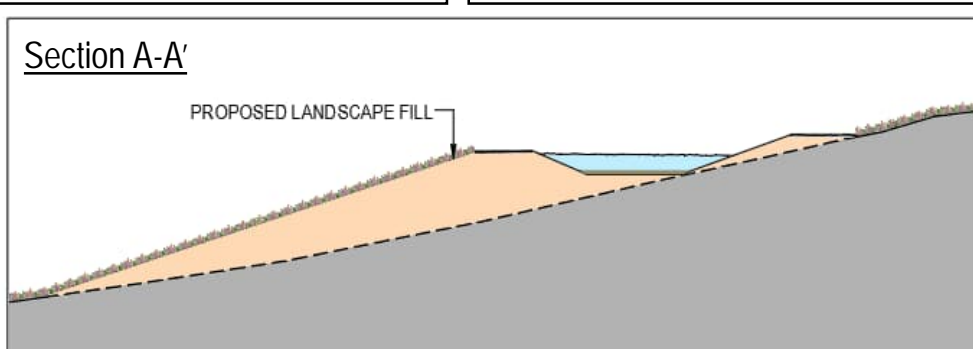
EARTHWORKS CONSTRUCTION PROCESS

<p>Step 1 Existing ground to be excavated to founding formation level.</p>	<p>Step 2 Approved engineering fill (as specified in Series 600 (Earthworks) of the Specification for Highway Works) to be laid in layers (i.e to a specified depth). Existing ground to be benched prior to laying the engineering fill (to allow each layer to interlock with one another).</p>	<p>Step 3 Each layer of engineering fill is to be compacted in accordance with Series 600 (Earthworks) of the Specification for Highway Works. This will involve a specified weighted construction vehicle (including the number of passes required).</p>	<p>Step 4 The Contractor is to carry out compaction tests on the engineering fill to ensure it is adequately compacted and is accepted as part of the construction specification.</p>



Section A-A'

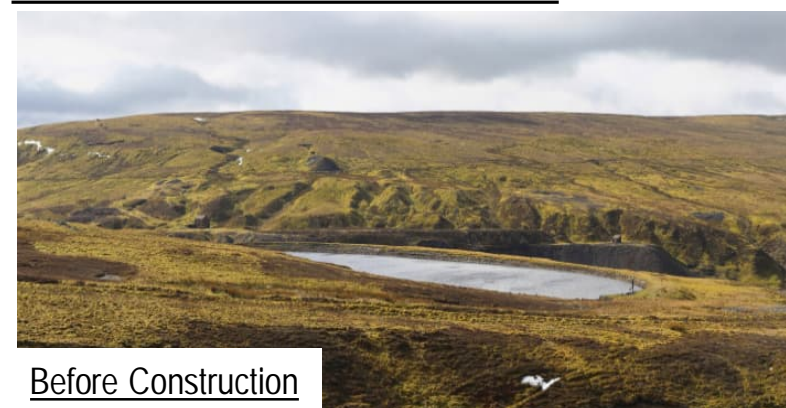
Step 5
Each layer is to be laid, compacted and tested until proposed earthwork levels are achieved.



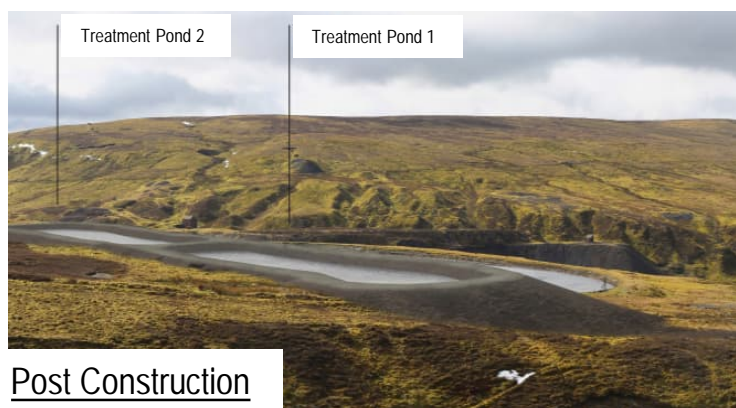
Section A-A'

Step 6
A landscape fill is to be applied to the finished treatment site earthworks. Landscape fill is proposed to have a similar appearance to the surrounding landscape.

EARTHWORKS VISUALISATIONS



Before Construction



Post Construction