



Flooding in 2013 from New Holland towards Barrow Haven

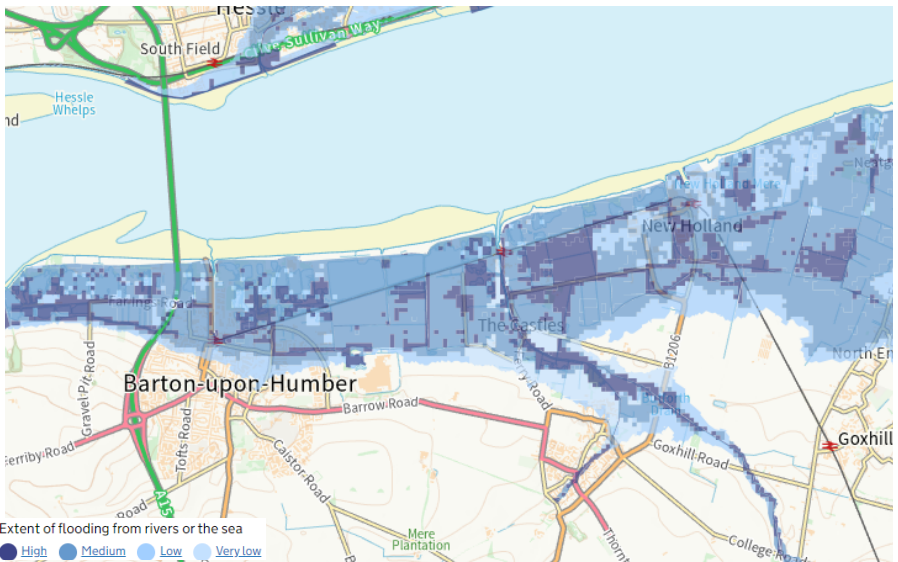
### Project Updates

Our ecological surveys are well under way! Started in January, these are vital for the project team to understand the ecology of the project area and any potential environmental impacts and benefits. Thank you to all landowners who have allowed us access so far, we are grateful for your continued co-operation.

Our second Resilience Advisory Group (RAG) meeting was held in early May and focused on ecology and the environment. The session involved some really interesting presentations and discussions with topic experts from the group. We have recently developed a longlist of options, which we are currently working on to rationalise into a shortlist that will achieve the scheme objectives, delivering environmental benefits and protect homes and livelihoods within the project area. We will continue to develop the evidence base as the project progresses and keep you updated.

### Flood Modelling

We are currently undertaking more detailed hydraulic modelling (the modelling of tidal flood scenarios) of the catchment to support the assessment of different flood risk measures. We are also undertaking wider flood modelling to explore what impact raising the defence across the study area might have on the wider estuary, and also how other measures across the estuary might affect the Barton to New Holland frontage. Our work also assesses the impacts of climate change.



This important piece of work will help inform the appraisal of the shortlist of options and ultimately guide the solution.

Map showing Barton to New Holland and extent of flood risk.

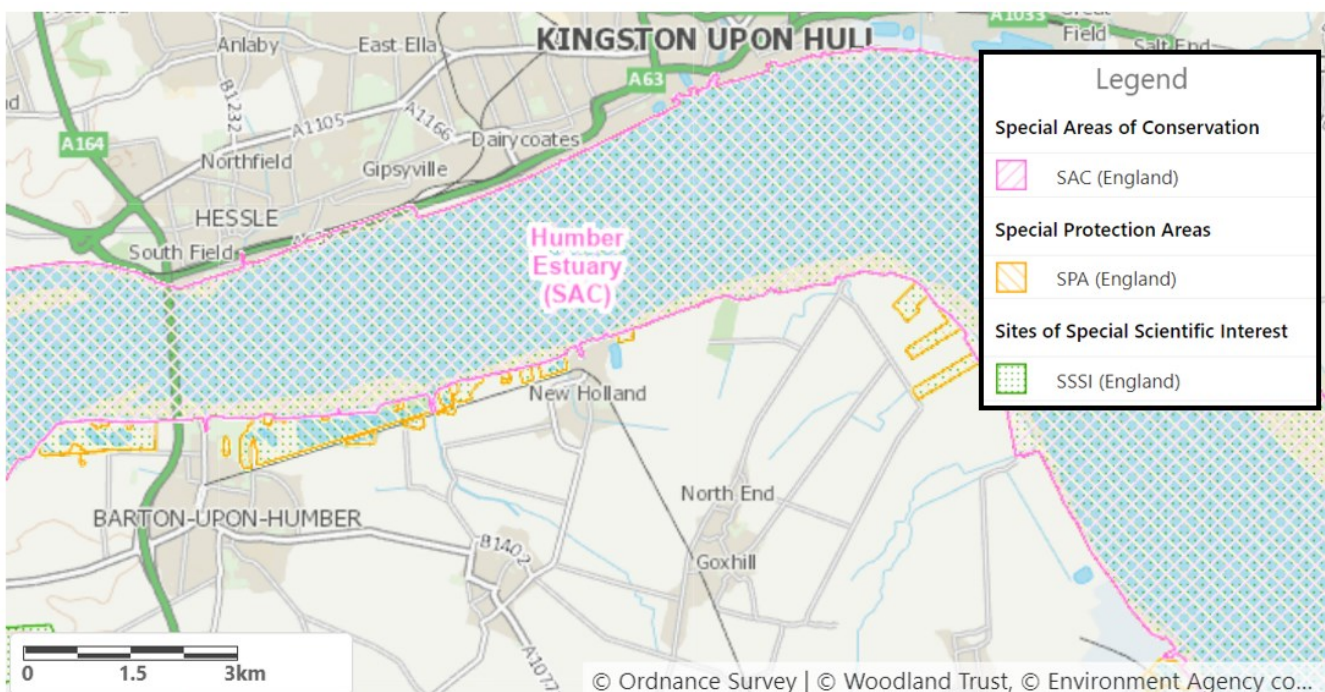


## Project Funding

The majority of this project will be funded by the Government. However, there will still be a substantial amount of supplementary funding to be sourced to help achieve our goal to reduce economic, social, and environmental harm in the long term, together with delivering amenity and environmental enhancements. Where possible, we will be looking to project partners for local funding contributions to help gather the remaining funds required to deliver the project.

## Environmental Opportunities and Constraints

It is highly important that we fully understand the environmental opportunities and constraints of the project area, as environmental risk must be considered throughout the optioneering process. Sometimes the cheapest option to construct flood defences can be at the detriment of the environment so it is important that we find a balance between a financially viable option which works with the existing local conditions.



This map shows the Special Areas of Conservation, Special Protection Areas and Sites of Special Scientific Interest. (The areas shown as SPA are also designated SSSI)

During the options development process we will also be looking for potential opportunities to enhance the current environment. Any opportunities within the project study area need careful consideration and any works may lead to a requirement for the creation of compensatory habitat.

There have been many species identified during our recent ornithology (bird) surveys recently including yellowhammer, starling, song thrush, skylark and bittern just to name a few!



## Working Together

We are in the process of updating our project webpage on Citizen Space! This page will be regularly updated with our progress. We are also looking into how we could make the page more interactive so keep an eye out for some new features coming soon!

We are also looking for other ways to spread the word and will continue to seek out community magazines and forums such as the Bartonian to help spread key information and seek your input. If you have any suggestions on how/where we can share information in the community, please let us know.

We will continue to hold meetings with our RAG members every two months. The group is made up of key stakeholders and community organisations, who meet every two months. Their role is to act as a conduit between the communities and the project team to help ensure our stakeholders have a voice in the projects development.



Photo taken on our site walk at the second RAG meeting in May 2022, moments before heavy rain!

## Next Steps

We are continuing to carry out flood modelling and ecological and environmental surveys throughout the next few months to help inform the shortlist of options to investigate further. If you have any concerns or queries, please contact us via the project inbox.

Our next Resilience Advisory Group meeting in early July will focus on the theme of engineering and we look forward to sharing updates from this meeting with you in our next newsletter. We look forward to holding the next Steering Group in meeting mid-July.

## Contact Us!

**Got a question? Why not contact our dedicated project team.**

**Email:** [BartontoNH@environment-agency.gov.uk](mailto:BartontoNH@environment-agency.gov.uk)

**Or to find out more scan the QR code to be taken straight to our Citizen Space webpage!**



SCAN ME

**Citizen Space Link:** <https://consult.environment-agency.gov.uk/lincolnshire-and-northamptonshire/barton-to-new-holland-flood-alleviation-scheme>