

Great Breach Alternative Route

We would like to make you aware of works which are being undertaken at Great Breach outfalls. Balfour Beatty are carrying out these works on behalf of the Environment Agency and TEAM2100.

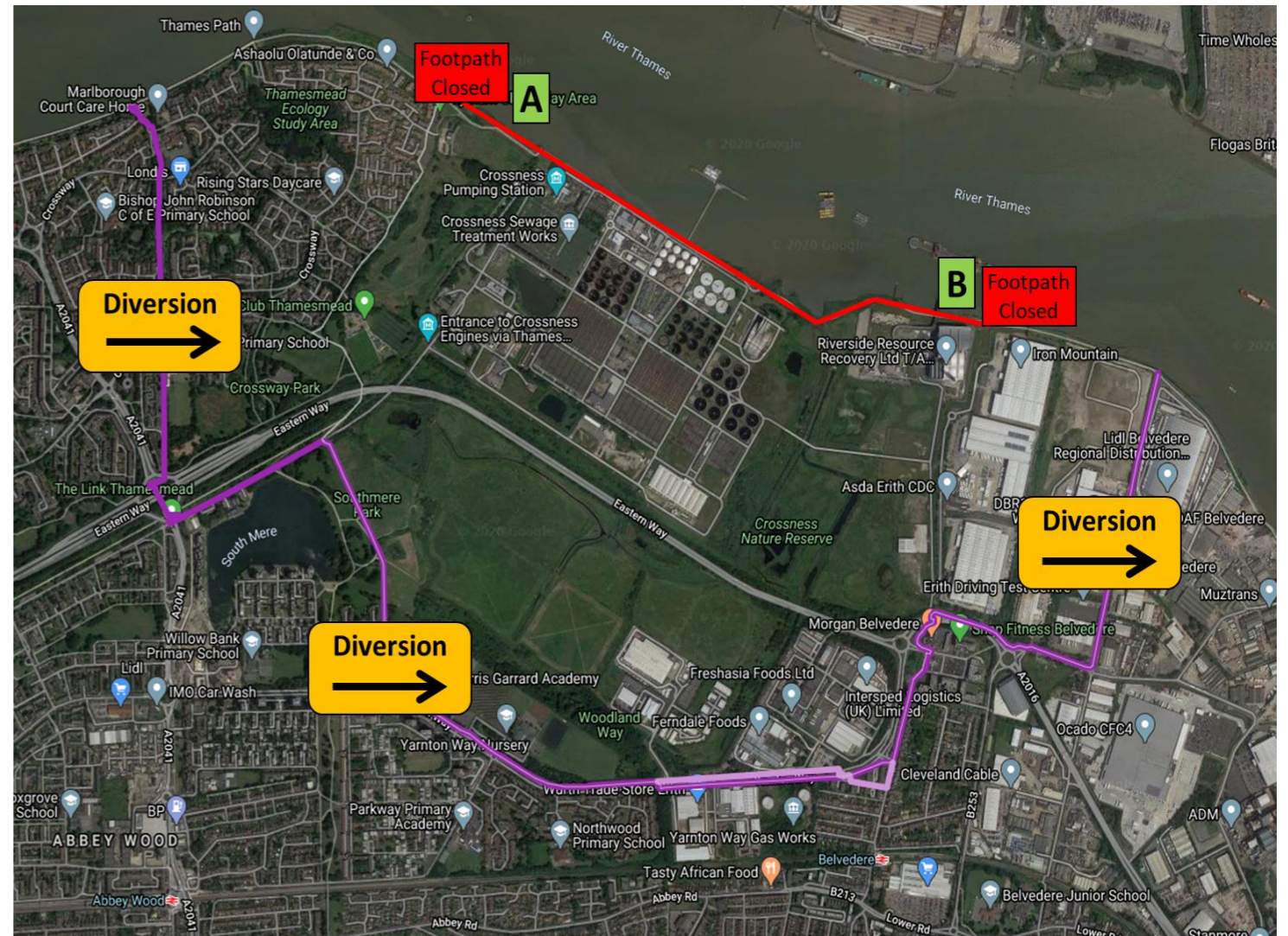
We will need to close the Thames Path from Point A (to the west of the Thames Water Sewage treatment plant) to Point B (immediately to the east of Cory Environmental Ltd). This closure is vital to maintain a safe working environment. The footpath and cycle path will be diverted as shown on the map and will remain closed for the entire duration of the works. This closure will be in effect from the beginning of March for up to 4 months.

While every effort has been made to find a suitable diversion, there are a few sections along the route which may require cyclists to dismount. These include traffic lights at designated crossing-points, small sections of pavements, physical gates along the footpaths and A-frame barriers. The QR code (and the link) below and the resulting map highlight these barriers and give further details to the diversion route map shown opposite.

We would like to apologise in advance for any inconvenience our works may cause and please be assured that we aim to complete the works with minimum disruption.

If you would like to discuss this further with the Environment Agency, please contact our Project Stakeholder Engagement Lead, Ben Frei.

You can contact Ben at ben.frei@Jacobs.com or at Environment Agency, TEAM2100, 111 Buckingham Palace Road, London, SW1W 0SR.



If you would like to know more about the TEAM2100 programme please see:

<https://www.gov.uk/government/news/thames-estuary-asset-management-2100-programme-team2100>

Crossness Diversion:

<https://drive.google.com/open?id=1d2dS0LwNhJU7J3lbeKMTZHRDoChRWDXu&usp=sharing>

