

- Legend**
- Planning area (Works footprint plus working area)
 - Proposed Access Road
 - Proposed Compound Area
 - Affinity Water - (Central Region) - Water BPA
 - CLH Pipeline System Ltd
 - GTC - Electric
 - GTC - Gas
 - Instalcom - [CenturyLink, Global Crossing, Fibernet & Fiberspon]
 - Openreach - [British Telecommunications]
 - Network Rail
 - SGN - (Southern Gas Networks)
 - SSE - Gas
 - Surrey County Council - Electric Street Furniture
 - Surrey County Council - Street light
 - Thames Water - Sewerage
 - Thames Water - Water
 - UK Power Networks
 - UK Power Networks - Substation
 - Virgin media
 - Zayo Group UK Ltd c/o JSM Group Ltd



SAFETY, HEALTH AND ENVIRONMENTAL INFORMATION

In addition to the hazards / risks normally associated with the types of work detailed on this drawing, note the following:

Safety:

- Fast moving water
- Major lifting
- Working within cofferdam / stoplogs

Environment:

- Concreting in / adjacent to watercourse
- Flood risk from temporary cofferdam
- Plant and mechanical machinery in channel

Maintenance and operation:

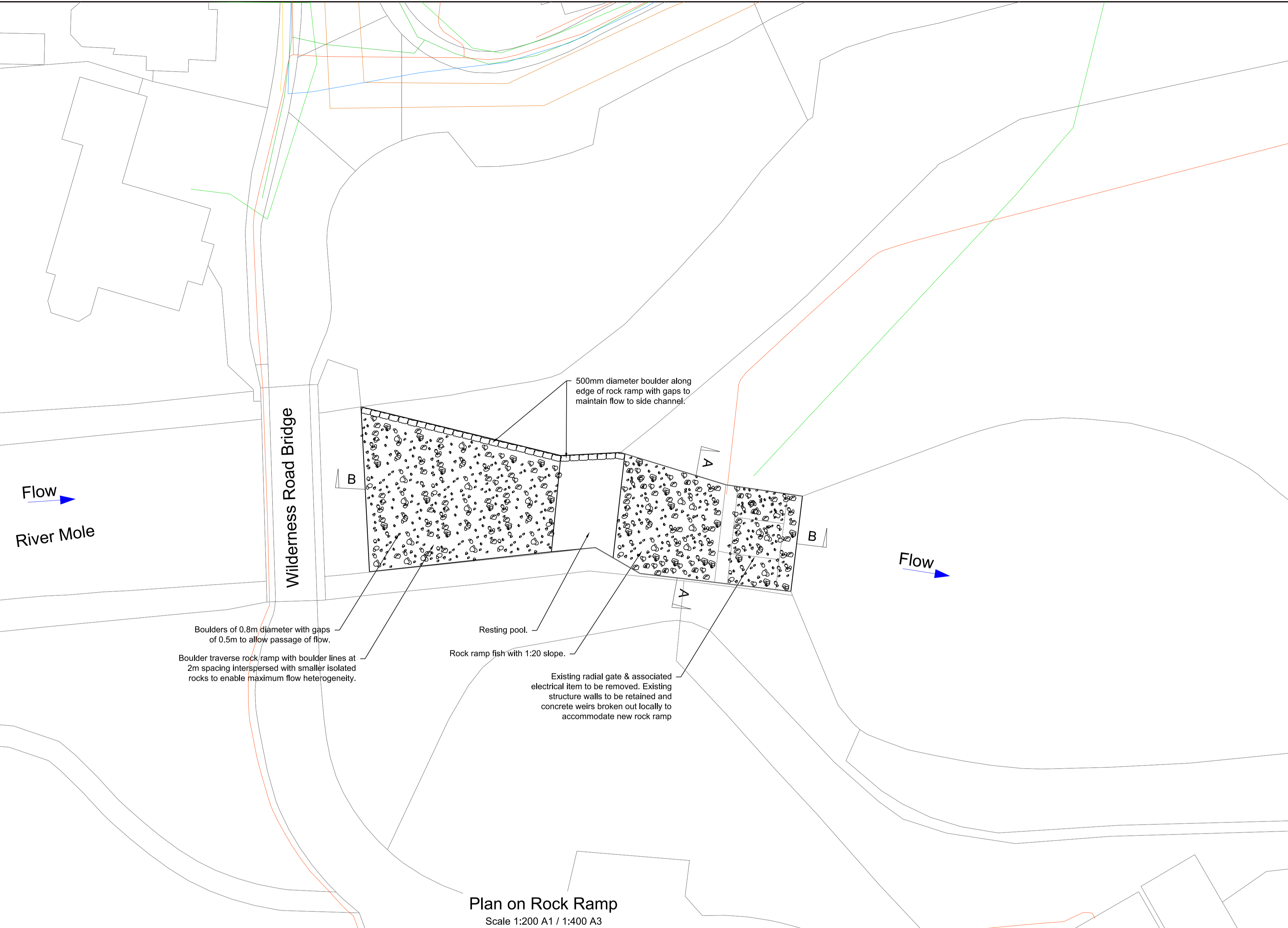
- No unusual maintenance / operational techniques

Decommissioning/demolition:

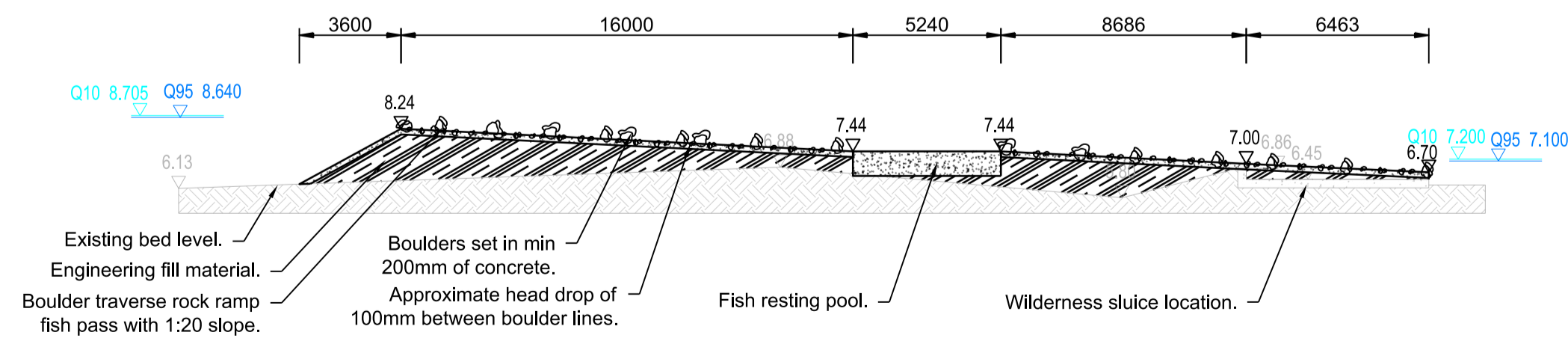
- No unusual construction techniques

It is assumed that all works will be carried out by a competent contractor working, where appropriate, to an approved method statement.

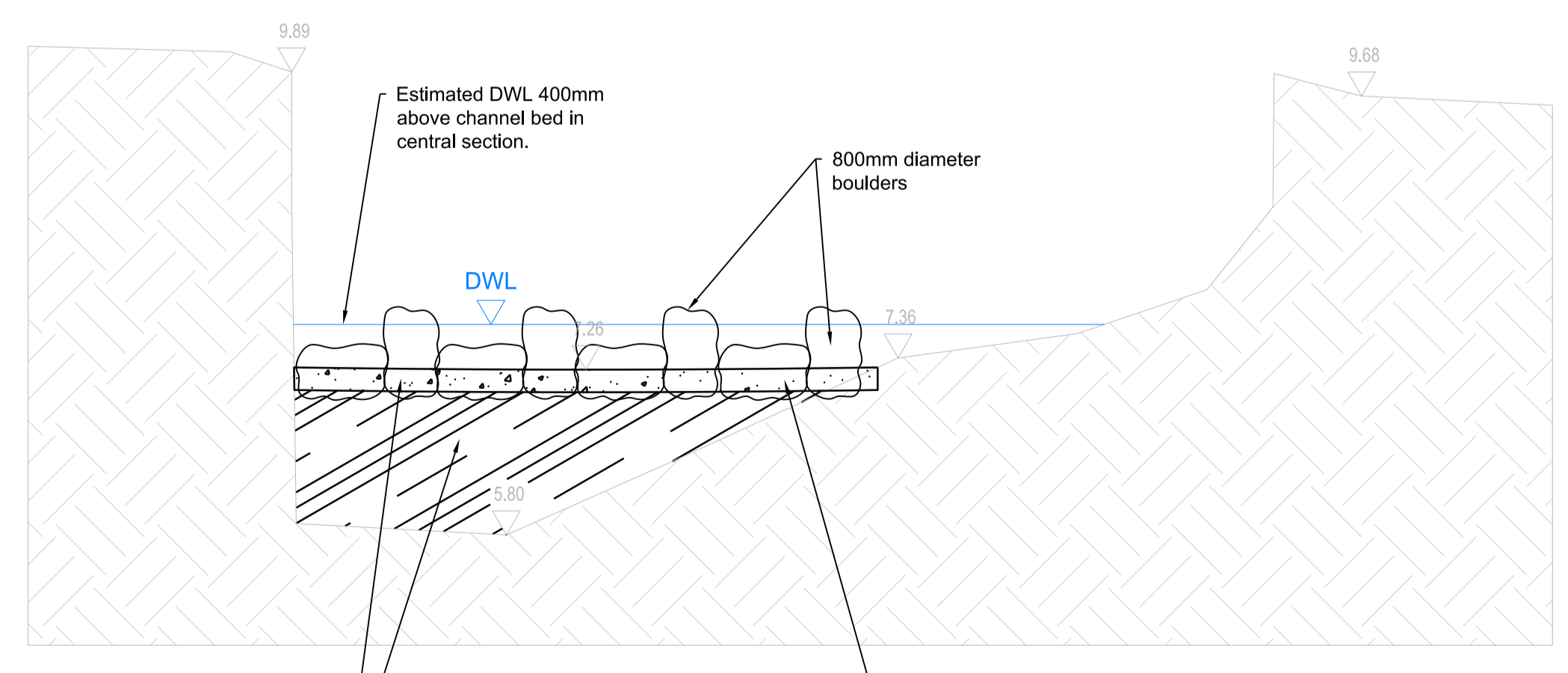
- Notes:**
1. All levels are shown in meters Above Ordnance Datum (Newlyn) unless stated otherwise.
 2. All dimensions are in millimetres unless stated otherwise.
 3. Drawing to be read in conjunction with Costing Requirements Note.



Plan on Rock Ramp
Scale 1:200 A1 / 1:400 A3



Section B-B
Scale 1:200 A1 / 1:400 A3



Section A-A
Scale 1:50 A1 / 1:100 A3

Rev	Rev. Date	Purpose of revision	Drawn	Checked	Rev'd	Apprv'd
P01	18/04/19	INITIAL DESIGN				

JACOBS
Floor 2 Cottons Centre, Cottons Lane, Golden Lane Estate, London Bldge, London, SE1 2QG
Tel: +44 (0) 161 873 8500 Fax: +44(0)161 873 7115
www.jacobs.com

Client: **Environment Agency**

Project: **LOWER MOLE FAS MAJOR REFURBISHMENT**

Drawing title: **WILDERNESS WEIR FISH RAMP DESIGN**

Drawing status: **DO NOT SCALE**

Scale: 1:200
Rev: **P01**

Jacobs No. B228E006
Client no. ENV0001296C
Drawing number: **ENV0001296C-CH2-00-2G0-DR-C-0001**

© Copyright 2019 Jacobs U.K. Limited. The concepts and information contained in this document are the property of Jacobs. Use or copying of this document in whole or in part without the written permission of Jacobs constitutes an infringement of copyright. Liability: This drawing has been prepared on behalf of, and for the exclusive use of, the Client. Jacobs accepts no liability or responsibility whatsoever for or in respect of, any use of, or reliance upon, this drawing by any third party.