



River Pinn catchment flood reduction
project

Consultation response report

Spring 2018

We are the Environment Agency. We protect and improve the environment.

We help people and wildlife adapt to climate change and reduce its impacts, including flooding, drought, sea level rise and coastal erosion.

We improve the quality of our water, land and air by tackling pollution. We work with businesses to help them comply with environmental regulations. A healthy and diverse environment enhances people's lives and contributes to economic growth.

We can't do this alone. We work as part of the Defra group (Department for Environment, Food & Rural Affairs), with the rest of government, local councils, businesses, civil society groups and local communities to create a better place for people and wildlife.

Published by:

Environment Agency
Horizon House, Deanery Road,
Bristol BS1 5AH
Email: enquiries@environment-agency.gov.uk
www.gov.uk/environment-agency

Further copies of this report are available
from our publications catalogue:
www.gov.uk/government/publications

or our National Customer Contact Centre:
T: 03708 506506

Email: enquiries@environment-agency.gov.uk.

© Environment Agency 2018

All rights reserved. This document may be
reproduced with prior permission of the
Environment Agency.

Executive summary

Introduction

This report is a summary of the outcomes from our public consultation, held online between 14 March and 9 April 2018. The aim of the consultation was to obtain public views on options proposed to reduce flood risk in the River Pinn catchment.

We ran the consultation online for 27 days and held 3 public events where we displayed information on the proposed options. We ran the consultation online to make it more accessible to a wide audience, and held the events in the areas affected by flooding or close to the proposed options. The deadline for return of offline responses was extended for a further 2 weeks to the 23 April 2018. This was due to direct requests from individuals and groups who contacted us to say they would like to respond but didn't find out about the consultation on time.

A total of 138 people signed in at our drop-in events. We estimate that this totalled about 180 individuals as a number of attendees signed in as couples. 89% of those who completed feedback forms told us that the events were useful or very useful. We received a total of 119 responses to the consultation. Of these 111 were submitted online plus a further 8 responses received offline.

Each submission, where permission was given, has been published online and can be read in full at: <https://consult.environment-agency.gov.uk/hnl/river-pinn-and-cannon-brook-consultation>

This document outlines how we ran the consultation and summarises the responses. We have also analysed the comments we received and summarised our responses to these.

We consulted on 6 specific areas within the project and these were split between the 3 drop-in sessions. These areas are as follows, and will be referred to throughout this document:

1. Pinner and Hatch End
2. East Ruislip
3. West Ruislip
4. Ickenham
5. Hillingdon and Uxbridge
6. Yiewsley

The project

Some of the notable outcomes from our analysis reveal:

- there is widespread support for a project being developed to reduce flood risk across the River Pinn catchment
- further information about the options is needed before communities can make an informed decision about whether they support individual proposals or not
- communities found the drop-in sessions useful and would like to see more contact from the Environment Agency as the project develops
- communities are concerned that the proposed options will increase risk to other areas
- communities are concerned about current river channel maintenance and the maintenance of anything new which is implemented in the area

These comments are extracted from a wide range of views we received. This document summarises these and other responses we received in further detail.

Next steps

The responses to the consultation will feed into our analysis of the proposed options. We will also look at technical considerations, environmental and social impacts to develop the options further and determine which are the most appropriate to take forward for further analysis. We currently plan to complete this analysis and share our preferred options in spring 2019. This is subject to change and we hope to be able to share information sooner than this dependent on the progress of the project through the next stage of analysis.

In the shorter term we will continue to produce quarterly briefing notes to provide updates to interested communities. We will engage directly with flood action groups who are providing us with vital local input into the options as we develop them further. We will be setting up a dedicated website for the project so that anyone interested can find the latest information.

Contents

Executive summary	3
Introduction	3
The project	3
Next steps	4
1. Introduction	6
2. Consultation objectives	6
3. The consultation process	8
The timeline for the consultation	8
Consultation events	8
Landowners	8
Consulting with our partners	8
Internal Environment Agency staff	8
Promoting the consultation	8
Online consultation	13
4. Public events	14
Content	14
Staffing	16
Who came to the drop-ins?	16
Visitor's drop-in experience	17
5. Opinions and comments	18
General comments	18
Pinner and Hatch End	20
East Ruislip	21
West Ruislip	24
Ickenham	26
Hillingdon and Uxbridge	28
Yiewsley	30
6. Making use of the feedback	32
7. Appendices	33
Appendix 1 - Pinner event leaflet	33
Appendix 2 - Ruislip event leaflet	33
Appendix 3 - Uxbridge event leaflet	33
Appendix 4 - feedback form	33
Appendix 5 - summary of feedback from drop-in events	33
Appendix 6 - consultation questions	33

1. Introduction

The River Pinn catchment is in the west of the Greater London area. It flows through the London boroughs of Harrow and Hillingdon before joining the Frays River in Uxbridge. As shown in the map on the following page, the Pinn is joined by several smaller rivers along its length, including the Cannon Brook in Ruislip. It is also fed by numerous outfalls which transfer excess rainwater to the river. The rivers flow generally in open channels made of earth, passing through various bridges and culverts.

Communities in the River Pinn catchment have experienced flooding several times, most recently in June 2016. We have been working with Hillingdon and Harrow Councils to better understand the causes of this flooding and identify actions that could reduce the risk in the future.

In the lead up to this consultation our work focussed on pulling together what we know about the catchment to determine the most effective solutions to reduce flooding. This included looking at previous studies and gathering knowledge about the flooding issues. We were able to develop a list of options which we are considering taking forward.

Our consultation in March and April 2018 presented these options to communities. This is the first time we have consulted on these options and we will continue to share information with communities and partners as we develop the options further. This report includes a summary of this first consultation and its outcomes.

2. Consultation objectives

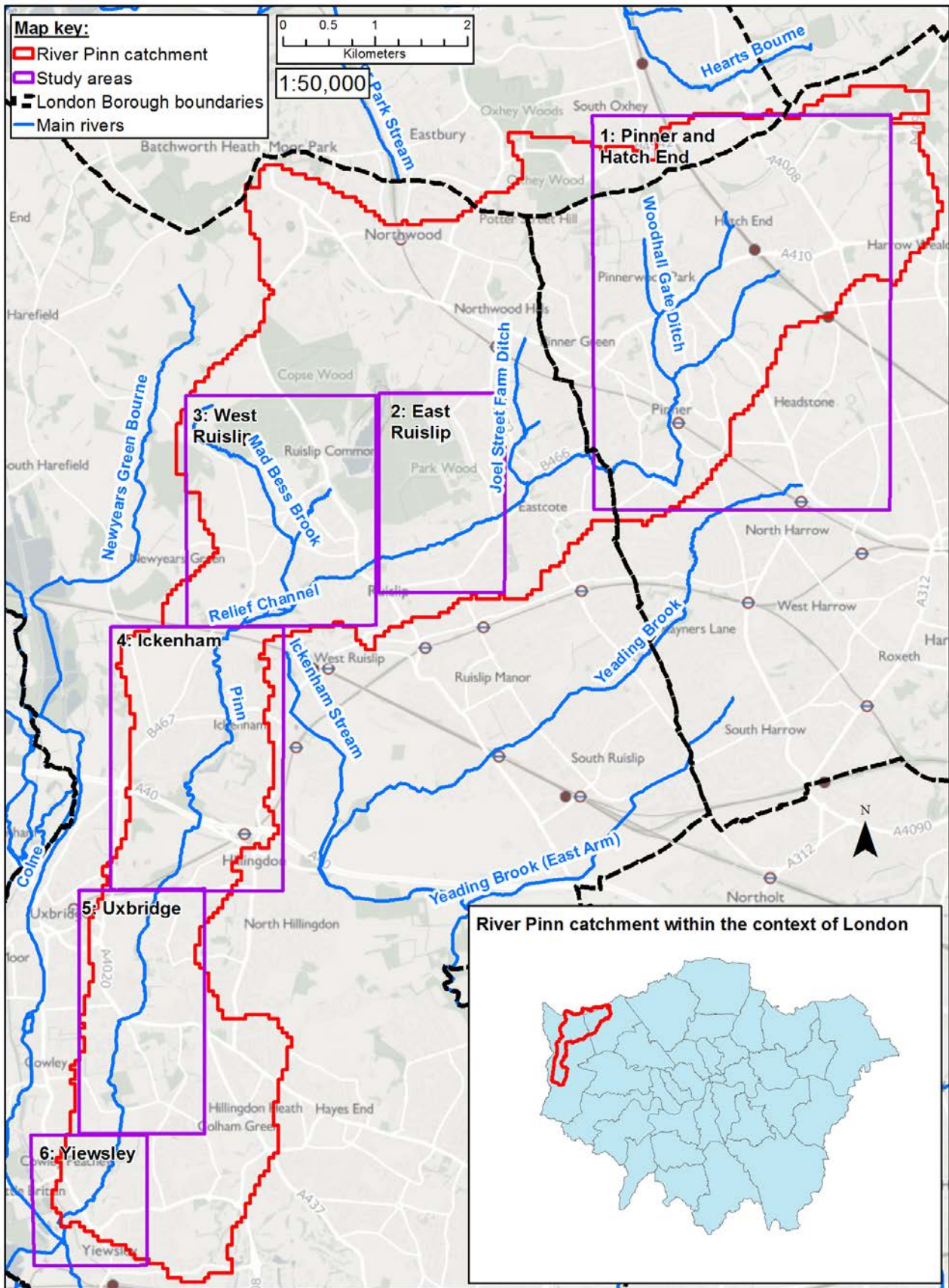
Our primary objective for this consultation was to talk to people living in the River Pinn catchment, particularly those who experience flooding, or live close to the areas where we have identified options to reduce flood risk.

We want to:

- better understand the risk of flooding in the River Pinn and Cannon Brook catchments
- collaborate with others to develop flood reduction proposals which maximise benefits for people and the environment
- work with local communities to ensure they understand our proposals and the actions they can take to be more prepared for flooding
- work with our partners to find funding from other sources to help us deliver viable flood reduction proposals

The consultation aimed to share the list of options we have identified for the River Pinn catchment to reduce flood risk and get opinions on these to help us develop these options in more detail.

The project team decided to run this consultation at an earlier stage than we would usually do. This is because we believe it is important to share and review what we are proposing before we get too far into detailed design. We want to be able to use the information gathered from communities and partners to influence our investigations. Not all of the options we consulted on will be delivered as part of the final project and the comments received will help us to determine which the most appropriate options to take forward are.



This map is based upon Ordnance Survey Material with the permission of Ordnance Survey on behalf of the controller of Her Majesty's Stationery Office. Crown Copyright. Unauthorised reproduction in this map is prohibited. Environment Agency 100026380, 2018

3. The consultation process

The timeline for the consultation

The online consultation opened on 14 March 2018 and closed on 9 April 2018. We extended the deadline for offline responses to the 23 April 2018. This was due to direct requests from individuals and groups who contacted us to say they would like to respond but didn't find out about the consultation on time. We were unable to extend the online consultation but extended the deadline to receive responses via email or in the post for a further 2 weeks.

We began preparing for public consultation in January 2018 as soon as we had the proposed options from our consultants. The timing of the consultation was due to restrictions during the pre-election period which meant we needed to hold our drop-in events before the end of March. If we hadn't met this deadline our drop-in events would have been delayed until May which would have further delayed the project.

Consultation events

We held 3 public drop-in events during the consultation. The venues were chosen to make it easy for as many people as possible to attend. Two of these events were held in community buildings close to flood affected communities in Ruislip and Pinner. The third was in Uxbridge to provide a convenient place for residents in the Ickenham, Uxbridge and Yiewsley areas to attend.

Each event was open from 4pm until 8pm to enable a range of people to visit. The events were held during a 2 week period, giving people a choice of dates.

Landowners

Ahead of holding our consultation drop-in sessions we carried out an initial land registry search to identify landowners for the locations of our proposed options. Where we could identify the landowners we sent out letters in late February or early March to make them aware of the consultation and give an overview of the proposals. The consultation process has also highlighted where we had gaps in our understanding of land ownership across the catchment. We will build on this list of landowners for future engagement and continue to engage with landowners as we develop the options further.

Consulting with our partners

We met with Harrow and Hillingdon Councils and Thames Water whilst we were developing the options which we consulted on. This was to ensure they were aware of the options and the information we were planning to share before the public consultation opened. We must continue to work closely with our partners as the project develops.

Internal Environment Agency staff

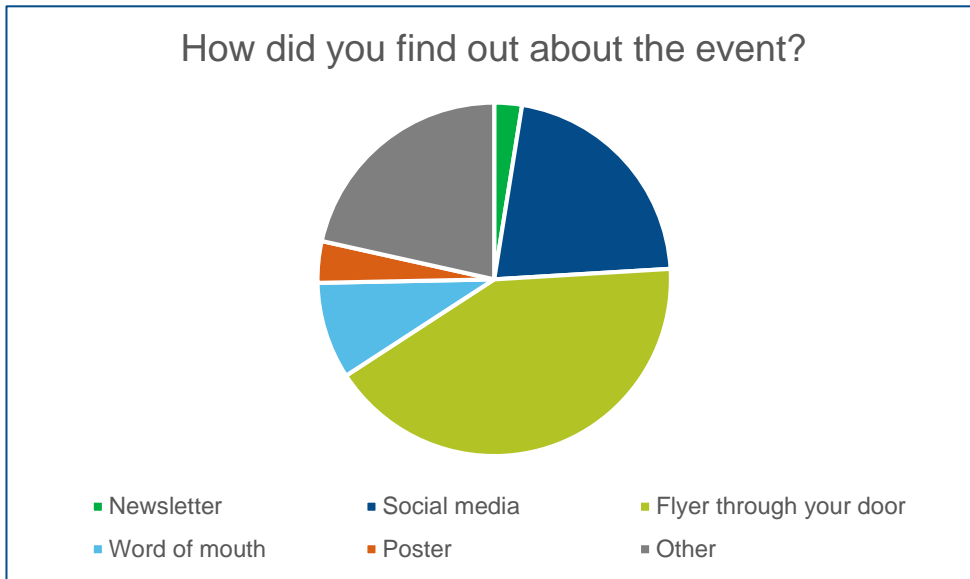
We held internal meetings with Environment Agency staff before and during the consultation period, to obtain their feedback and comments. Their comments have been taken into account to help decide upon the options which we presented through the consultation. Environment Agency staff with different specialisms and interests attended the drop-in sessions to answer questions and provide information on river maintenance, flood warnings and opportunities for environmental enhancement across the catchment.

Promoting the consultation

We used a variety of methods to advertise the consultation and the drop-ins including posters, a letter drop, direct emails to local flood action groups, Hillingdon Council's website, school newsletters and social media. The list of people directly contacted prior to our drop-in was based on our understanding before the consultation. Through this consultation we have improved our

understanding of who the interested parties are and added others to our mailing list for future communication on the project.

The graph below shows how attendees found out about the events and demonstrates that overall, across all 3 drop-in events, flyers through individual doors was the most effective approach.



We issued a press release ahead of the first event, inviting local media to publicise the events. An example from Get West London is shown below:

News | West London News | Flooding

River Pinn flooding: Environment Agency reveals proposals to build new defences to prevent future flood

The River Pinn has flooded 16 times in the last 70 years

By Qasim Peracha
13:24, 18 MAR 2018

Enter your postcode to see news and information near you
Community updates, Crime Statistics, Local News & Events and much more...

Enter your postcode

WHEN A FLOOD WARNING IS ISSUED
- JUST 6 INCHES OF MOVING WATER CAN KNOCK YOU DOWN
ONE FOOT OF MOVING WATER CAN KNOCK YOUR VEHICLE AWAY

WATCH NEXT
Hillingdon local elections information including full list of candidates and how to vote...

SHARE THIS VIDEO

WATCH NEXT
Flood alerts in place for Hillingdon, Harrow and Bre...

Get Daily updates directly to your inbox
Enter your email

Residents living near the River Pinn in [Harrow](#) and [Hillingdon](#) are being consulted on proposals to prevent the river from flooding.

The Environment Agency has worked with [Hillingdon](#) and [Harrow Councils](#) and [Thames Water](#) to devise a strategy to lessen the risk of flooding.

PROMOTED STORIES

People Don't know this Simple Check if you had PPI
Money Advice Direct

The approach we took for each of the drop-in sessions is described in the next section. Due to the limited amount of time we had available to promote the events, we used a slightly different approach to each depending on available resources.

14 March 2018

This event was held at Kings Café, Kings College Rd, Ruislip HA4 7JZ.

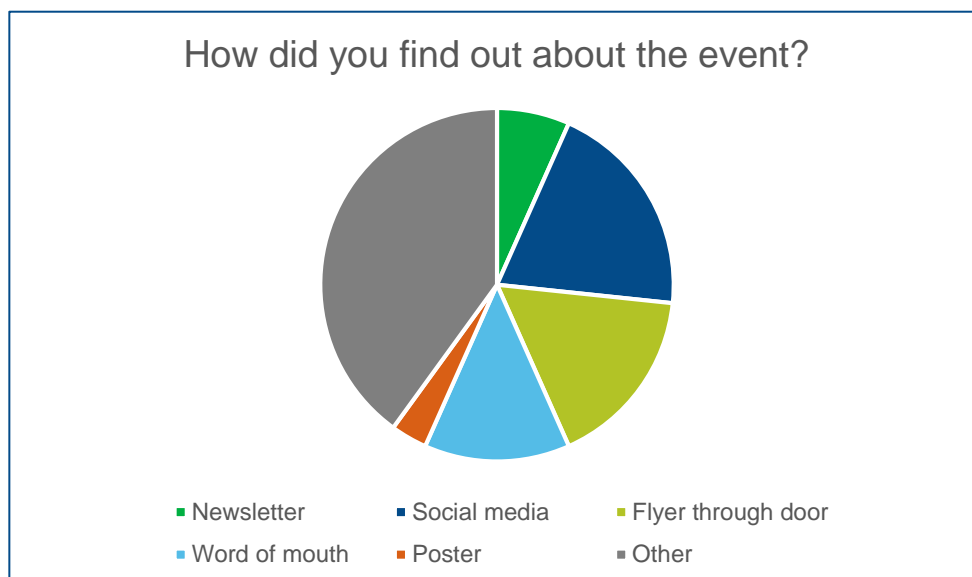
We produced the leaflet shown in appendix 1 and circulated it to:

- individuals via email who had already requested to be kept informed about the project because we have been in touch with them about flooding before
- Hillingdon Council to include on their website and circulate to individuals they were aware might like to attend
- 7 local schools to include in their newsletters and on noticeboards
- 3 churches to put on noticeboards
- 8 locals libraries, cafés and local clubs
- local councillors

The event was also advertised on social media:



For this event, "other" methods, which included direct letters or emails from Hillingdon Council, communication through flood action groups and church emails proved to be the most successful. Around a third of people who attended found out about the events through these methods.



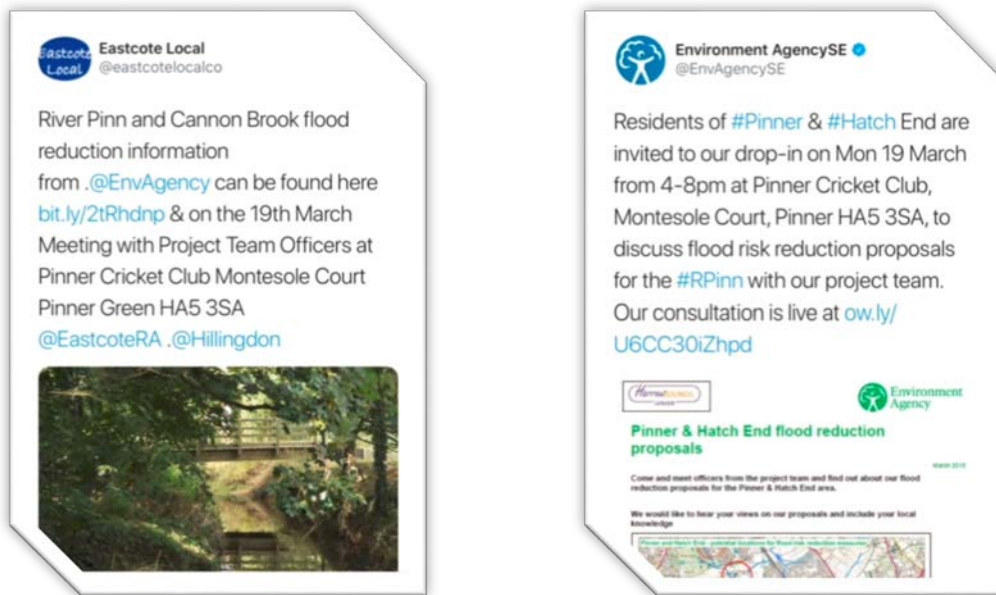
19 March 2018

This event was held at Pinner Cricket Club, Montesole Court, Pinner, HA5 3SA

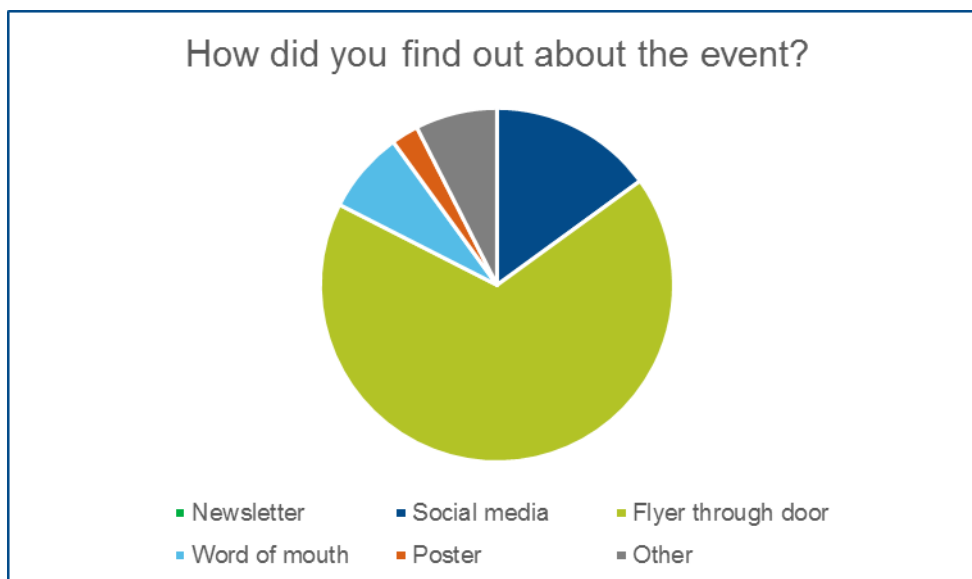
We produced the leaflet shown in appendix 2 and circulated it to:

- approximately 1500 local residents (through Harrow Council leaflet drop)
- individuals via email who had already requested to be kept informed about the project because we have been in touch with them about flooding before
- Harrow Council to include on their website and circulate to individuals they were aware might like to attend
- 5 local schools to include in their newsletters and on noticeboards
- 5 churches to put on notice boards
- local councillors

The event was also advertised on social media:



For this event, flyers through individual doors proved to be the most successful. Around two thirds of people who attended found out about the event through this method.



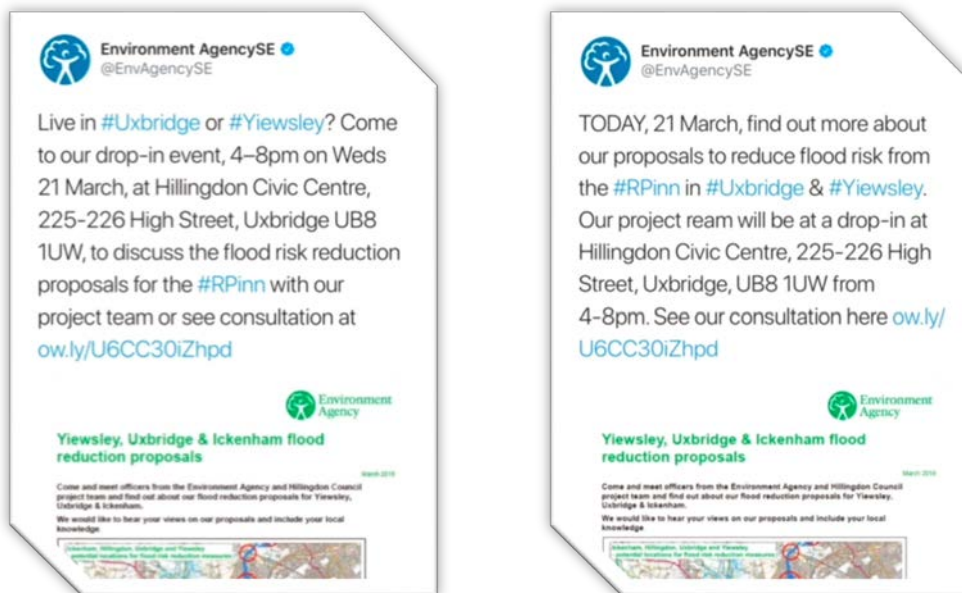
21 March 2018

This event was held at Hillingdon Civic Centre, 225-226 High Street, Uxbridge, UB8 1UW

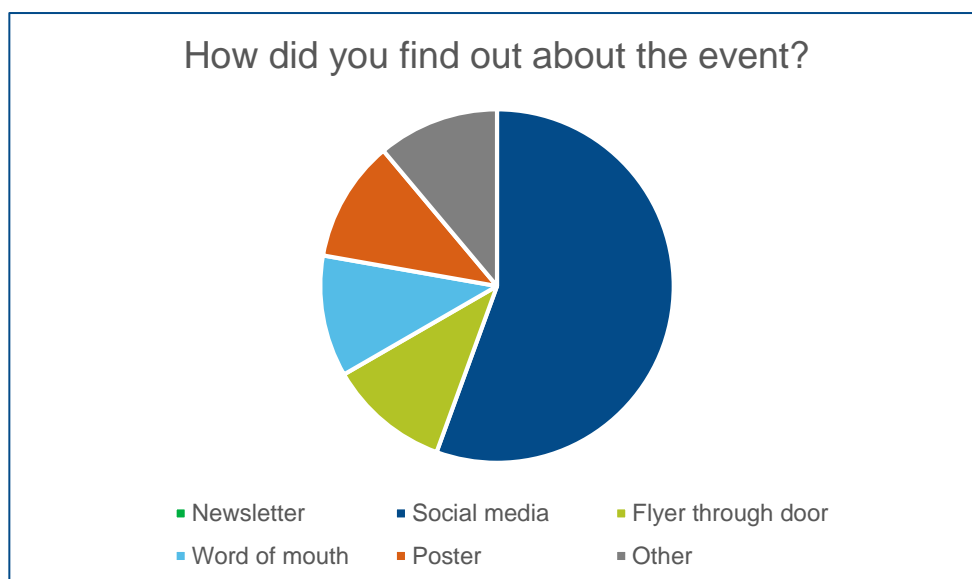
We produced the leaflet shown in appendix 3 and circulated it to:

- individuals via email who had already requested to be kept informed about the project because we have been in touch with them about flooding before
- Hillingdon Council to include on their website and circulate to individuals they were aware might like to attend
- 16 local schools to include in their newsletters and on noticeboards
- 9 churches to put on noticeboards
- 13 locals libraries, cafés and noticeboards
- local councillors

The event was also advertised on social media:



For this event, social media proved to be the most successful. Over half of people who attended found out about the event through this method.



Online consultation

In addition to our public drop-in events, we also made the consultation information and response form available online at <https://consult.environment-agency.gov.uk/hnl/river-pinn-and-cannon-brook-consultation/> between 14 March and 9 April 2018. We did this to ensure that a wide range of people could take part in the consultation even if they weren't able to attend one of our events. The online consultation was promoted through QR quick link posters at our events and on all of the flyers we distributed. Our partners also promoted the online consultation on their websites and in a range of other communications.

The questions asked as part of the online consultation were put together based on the objectives of the consultation. These were to:

- better understand the risk of flooding in the River Pinn and Cannon Brook catchments
- collaborate with others to develop flood reduction proposals which maximise benefits for people and the environment
- work with local communities to ensure they understand our proposals and the actions they can take to be more prepared for flooding
- work with our partners to find funding from other sources to help us deliver viable flood reduction proposals

A section entitled "about you" included questions designed to help us find out more about flooding across the River Pinn catchment. We also asked for email addresses so we can build our list of people who have requested to be kept informed about the project for future engagement.

The rest of the consultation shared our proposed options to reduce flood risk across the 6 areas and asked for opinions on these. A key part of the consultation was also to establish the current use of any areas where we are proposing options. This is very important for the next phase of the work when we are making decisions about which options to progress and designing them in further detail.

A copy of the questions we asked is included in appendix 6 of this report.

We received a total of 119 responses to the consultation. Of these 111 were submitted online plus a further 8 responses were received offline in the post or via email.

4. Public events



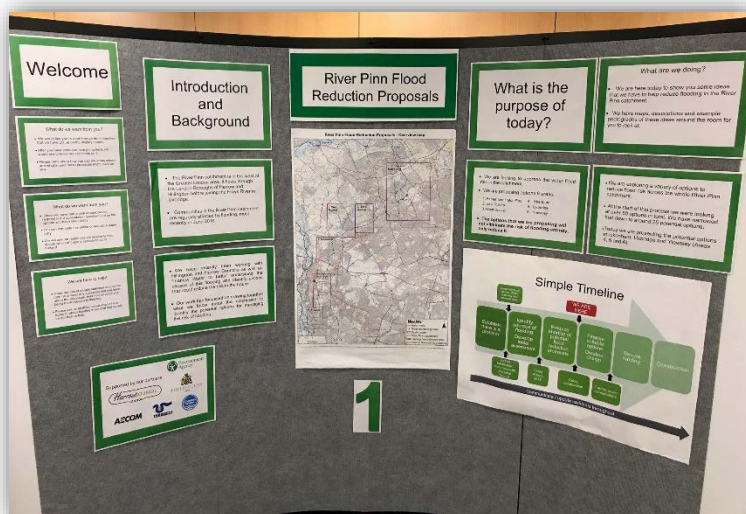
Our public drop-in events were designed to give visitors information about the potential options and the opportunity to speak with the team from the Environment Agency, our consultants and partners.

Each visitor was welcomed, briefly introduced to the exhibition and given a feedback form.

Visitors signed in and were invited to leave their email addresses if they wanted to receive future e-newsletter updates on the scheme.

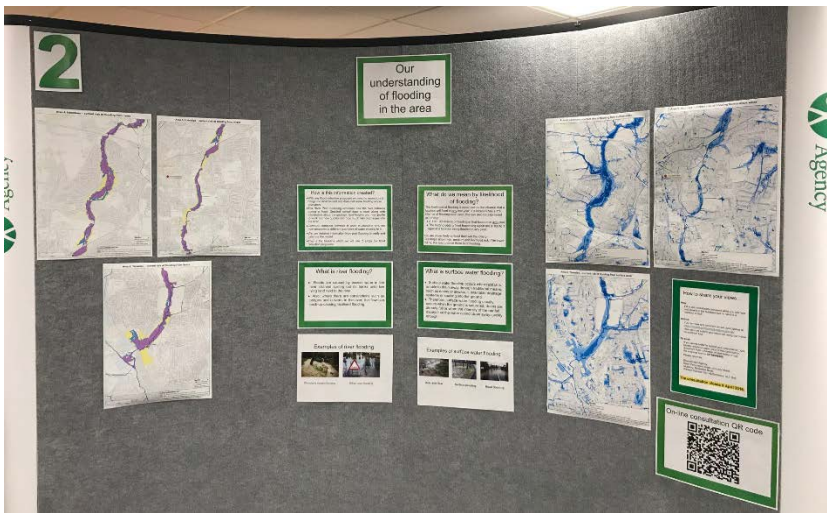
Content

The primary focus of interest at the drop-in events was a series of panels showing the following:



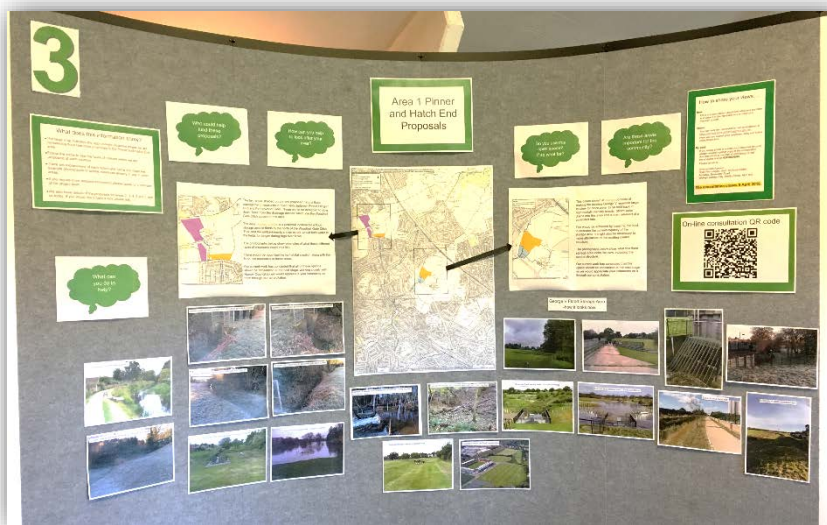
1. An introduction to the project and the background of flooding in the Pinn catchment, including why we are considering a project to reduce flood risk.

We explained the purpose of the event and what we would like to get from those who attended.



2. Our current understanding of flooding in the area.

We included information on surface water risk as well as the risk from the river to show an indication of the areas which could potentially be affected by flooding



3. Our flood reduction proposals for the area in which the drop-in was being held.

We included lots of example photos of locations where similar options were already in place.

The third panel attracted the most interest as it showed the options we have developed with our consultants and was the information we were asking for comments on through our consultation.

To allow scrutiny of these options we divided them into the 3 areas where we were holding the drop-in sessions and only presented the options relevant to that area on the display panel. Although information and maps were available on request for the other areas as well.

In addition, we had a fourth display which provided:

- information on how to be more resilient to flooding
<https://www.gov.uk/prepare-for-flooding/future-flooding>
- an opportunity to sign up for flood warnings and alerts
<https://www.gov.uk/sign-up-for-flood-warnings>
- advice on creating flood action groups and flood plans
<https://www.gov.uk/government/publications/flood-plan-guidance-for-communities-and-groups>

We also had a table with a number of blank maps of the area which gave people the opportunity to add any information they thought might be useful to us. For example; areas they knew had flooded in the past, areas we may not have considered and details of how they may have flooded.

Staffing

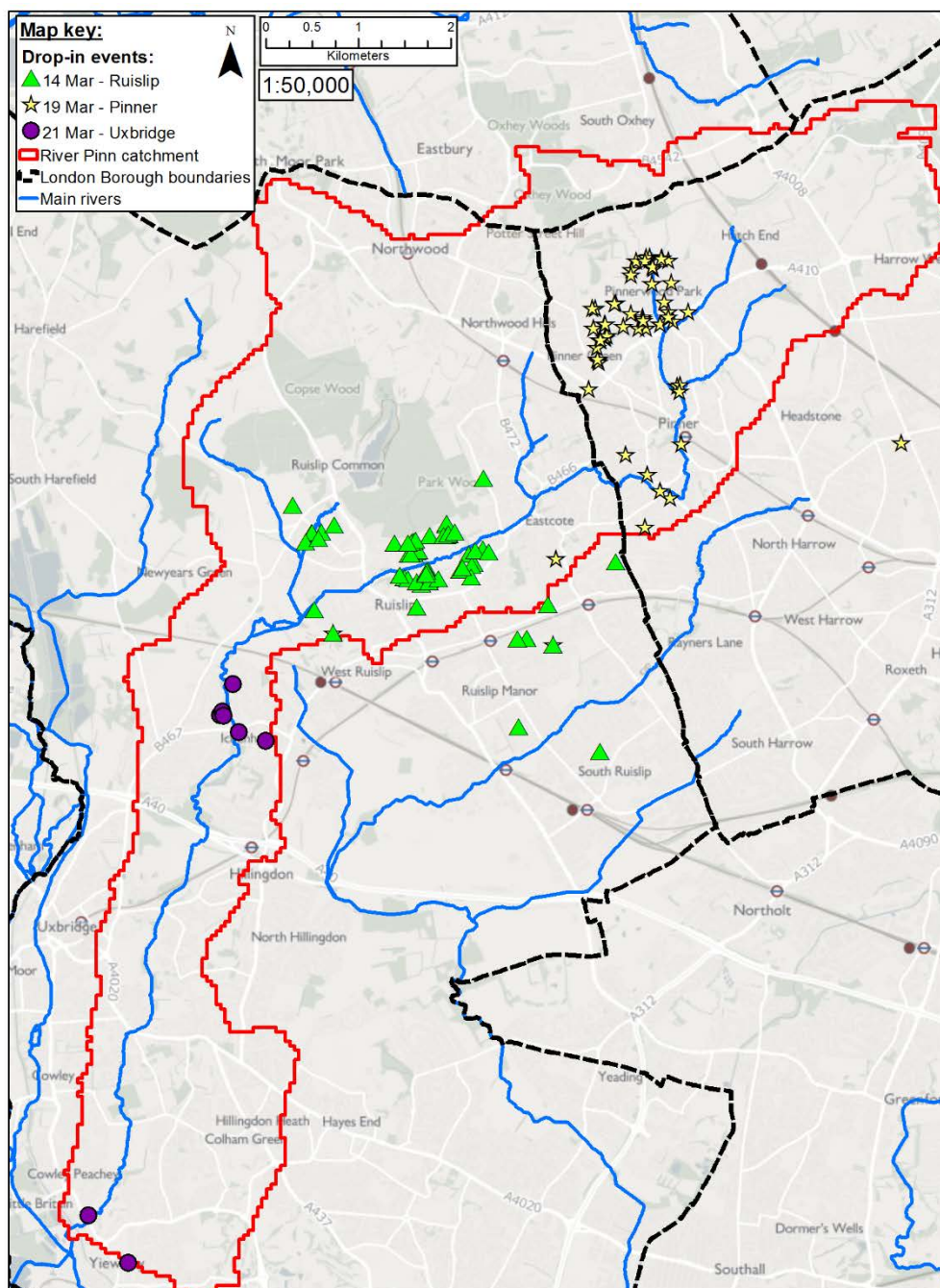
At each event team members from the Environment Agency, partners and consultants were available to speak with visitors. Our team at each event included specialists who were available to respond to more detailed questions and concerns.

At the events in Ruislip and Uxbridge we had representatives from Hillingdon Council and in Pinner and Hatch End we had a representative from Harrow Council. Thames Water and Thames 21 also attended the Ruislip event as they had a particular interest in that area.

Who came to the drop-ins?

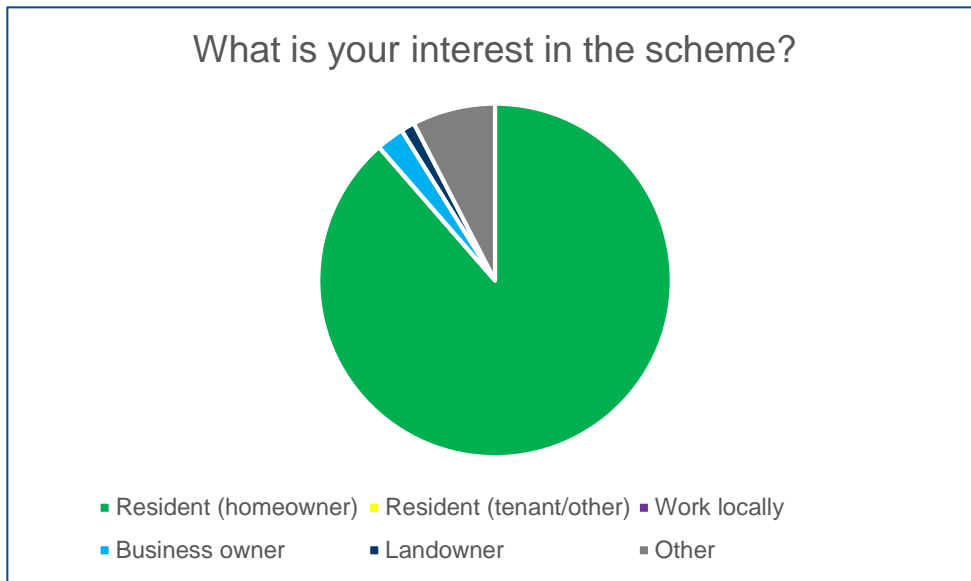
In total around 180 people visited the drop-in events, with our 2 sessions held in the upper part of the catchment being more popular than the session held in lower part of the catchment.

The largest number of people attending each venue were drawn from the nearby community, but a number of people at each event came from further afield. The map below shows who attended which drop-in based on the postcodes they provided when signing in.



This map is based upon Ordnance Survey material with the permission of Ordnance Survey on behalf of the Controller of Her Majesty's Stationery Office. Copyright. Unauthorised reproduction in any form is prohibited. Environment Agency 10020300, 2010

The majority of attendees were interested in the options as they are a resident (home owner) in the local area.



Visitor's drop-in experience

Our drop-in events were very favourably received by visitors.

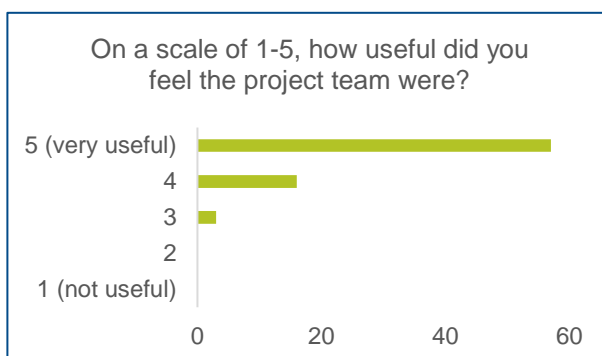
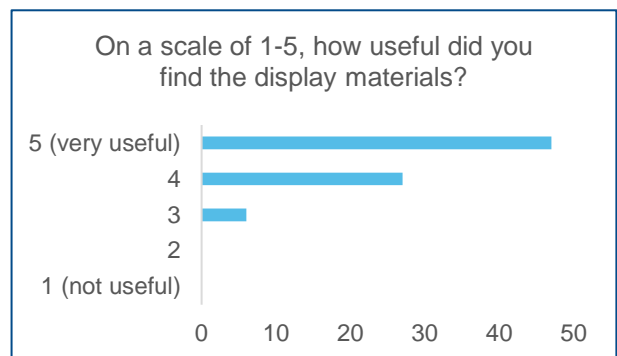
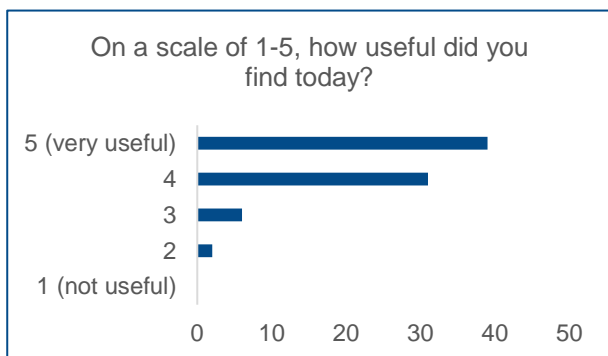
"The event was a model of its kind. Very clear and helpful"

"Good clear displays. Friendly project team. Good to have flood warning call on the phone."

"Very good idea getting information to local residents and information from local residents."

At each of the public drop-in sessions we provided feedback forms which we asked all attendees to complete before leaving the event. A copy of this is shown in appendix 4. Some of the feedback we received is summarised in this section and more detail can be found in appendix 5.

Overall, attendees found the events, the display material and the project team useful or very useful.



5. Opinions and comments

During the consultation we asked for views on the options, split into the 6 areas. We asked consultees to tell us whether they agreed with the individual options or not and to share their reasons for these choices. The comments and observations made about each option are summarised by area in this section.

There were also opportunities in the consultation questions for people to express general views and comments. We have summarised the range of views expressed in this section. Each submission, where permission was given, has been published online and can be read in full at: <https://consult.environment-agency.gov.uk/hnl/river-pinn-and-cannon-brook-consultation>

General comments

There were some general comments which were raised by many respondents. These are summarised in this section.

Our analysis of the responses reveals that there is widespread support for reducing flood risk across the catchment. 87% of those who responded confirmed that they support some form of flood reduction project. A further 8% were unsure. The remainder who didn't support the proposals were either concerned about moving the flood risk elsewhere or hadn't been directly affected by flooding so didn't see the need for a project.

"I fully support any scheme which will help reduce flooding to the River Pinn..."

"The June 2016 flooding caused great damage to our house and several other houses in the road. This resulted in a big insurance claim, massive disruption....and huge personal distress. Anything....that can be done to alleviate the risk of something similar happening in the future must be done as soon as possible..."

"Although our house has not been flooded we are concerned that climate change is resulting in more frequent flash storms similar to the 23/06/2016 incident thus putting our home at risk."

"...The proposals as I understand it will simply spread the risk (and costs) of flooding over a wider area... These proposals will have a negative impact on house prices and insurance costs over a wide area."

Response:

We are pleased that the majority of respondents want to see flood risk reduced across the River Pinn catchment. The consultation was a useful exercise to help us better understand the flood risk and priorities for local communities. One of our underlying principles for undertaking any flood risk reduction project is that flood risk will not be made worse elsewhere. We will make this clearer in future consultations.

Many respondents highlighted that they needed further information about the options before they could make an informed decision about whether they support individual proposals or not.

"Not enough information provided to make a decision."

"I don't feel that enough information has been given at this stage regarding the proposed measures: how big walls would be, how would they look, how a flood storage area would look, what would be access to the flood storage area when it is not in use, what measures will be used to keep flood water within the flood storage area. Until we have this information, we cannot give an informed acceptance or rejection to any of the options."

Response:

We understand that some respondents found it difficult to provide comments without a greater level of detail. At this stage these are initial ideas and after further investigation more detail on viable options will be available as the project progresses. There will be further opportunity to comment on the developing proposals and when we next share information with the public we will have more specific details about individual options.

Communities found the drop-in sessions useful and would like to see more contact from the Environment Agency as the project develops. Some respondents were disappointed they didn't find out about the drop-in events or found out about the consultation very late.

"Impressed with the catchment approach to flooding risk. Consultations were very informative and it was great to see many organisations represented at them..."

"....I'm not sure how much publicity there has been as I didn't know about the local drop in events. I don't know if local libraries or other places had information but if so, unfortunately I didn't see it."

Response:

We used a variety of different methods to promote the consultation and our community drop-in sessions. Due to limited time in the run up to the election and limited resources to undertake letter drops we were not able to advertise as widely as we would have liked. We are happy with the number of responses we received and this consultation has helped us to build up our mailing list of those who wish to be kept informed about the project for future communications. Anyone who is not already on the mailing list but would like to be can email HNL-PSO@environment-agency.gov.uk and request to be added.

Respondents expressed concerns about current river channel maintenance and the maintenance of anything new which is implemented in the area.

"It would....seem sensible to consider maintenance related measures. Existing drainage ditches (and surface water drains) in the local vicinity have been poorly maintained....Any measures, old or new, need a commitment to maintenance...."

"None of the....measures will have much value unless the existing measures to clear flood water are properly maintained. This includes clearing the ditches and in particular the culvert of fallen branches and leaves. At the present time, this appears to be neglected."

Response:

We understand the concern that any new flood risk reduction measures are maintained and this is something we will have to build into our proposals as the project develops. We will not be able to take options forward without a plan to maintain them into the future. We carry out our current maintenance work in line with government policy to provide the greatest benefits to people and property at risk of flooding with the available funding. Our current maintenance schedule and interactive map can be viewed here: <https://www.gov.uk/government/publications/river-and-coastal-maintenance-programme>

Pinner and Hatch End

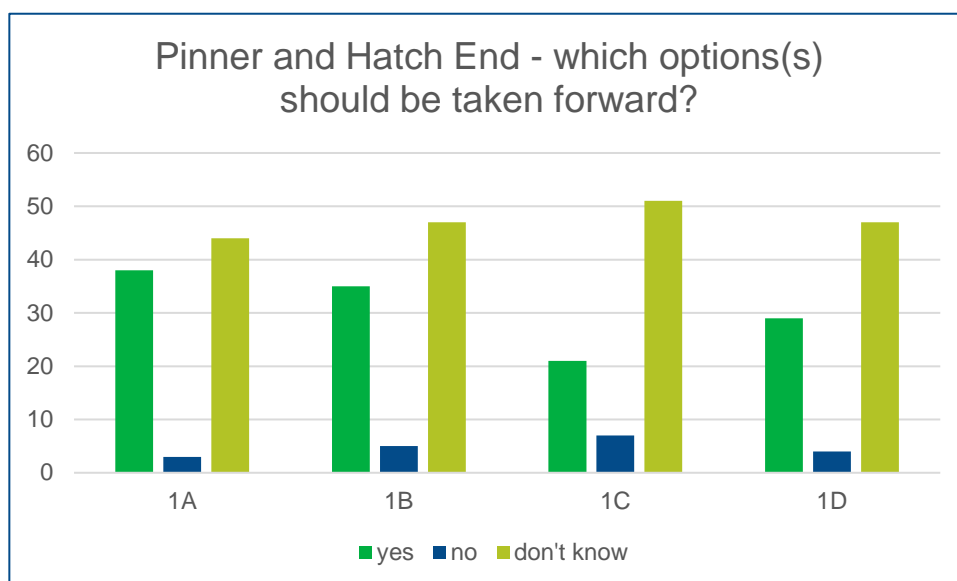
In the Pinner and Hatch End area we consulted on 4 different options. We asked respondents to choose all of the options which they believe we should take forward for further analysis and investigations.

Comments about the options

The options we consulted on are in the table below. The questions we asked and maps of the option locations can be found in appendix 6.

Option reference	Option type	Option description
1A	Natural flood management (NFM)	Consisting of leaky log dams and other NFM measures to slow flows from drainage ditches entering the Woodhall Gate Ditch above Albury Drive.
1B	New flood storage area	Storage of flood water in fields above Albury Drive to control the flows into the Woodhall Gate Ditch.
1C	Embankment	As an alternative to 1B. Instead of a flood storage area, this would be an earth embankment to prevent a smaller amount of runoff from the fields entering gardens and homes.
1D	Existing flood storage area	Modification of the existing flood storage area at George V Avenue to store more flood water during high flows.

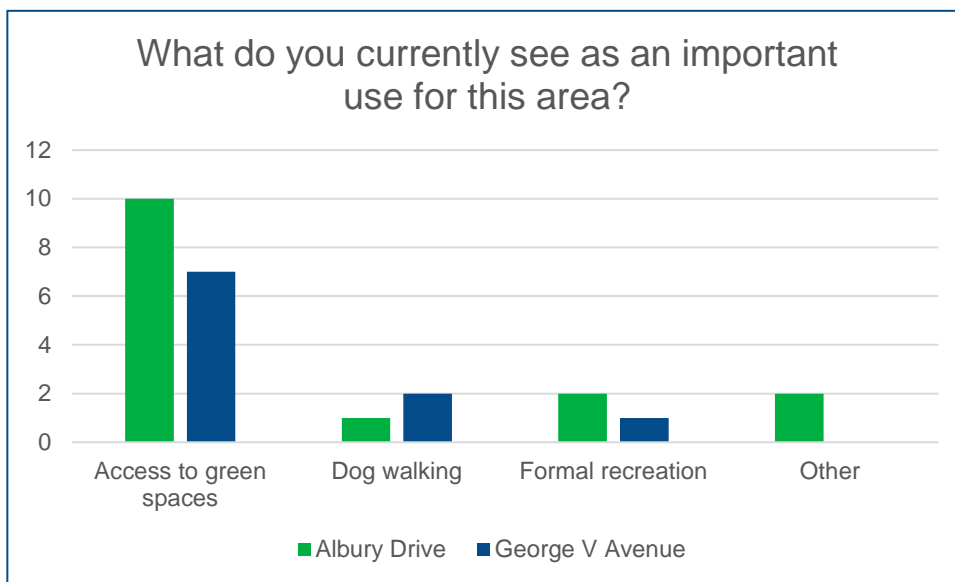
The most favoured option was option 1A and the least preferred option was option 1C.



Over 50% of people who answered this question responded "don't know" to each of the options. This reflects the fact that respondents didn't feel like there was enough information provided to enable them to make an informed decision. As stated in the previous section these are initial ideas and further detail will be available as the project progresses.

Comments about current use of the area

We also asked people to tell us whether they currently use the green spaces to the north of Albury Drive and next to George V Avenue. Of those who answered this question, general access to green spaces was seen as most important.



Other comments

We gave respondents an opportunity to tell us anything else they believed was important when considering options for the Pinner and Hatch End area. Other comments included:

- there is a scheduled ancient monument near to option 1D which needs to be considered
- an area of development is planned for South Oxhey at the top end of the Pinnerwood Farm area

East Ruislip

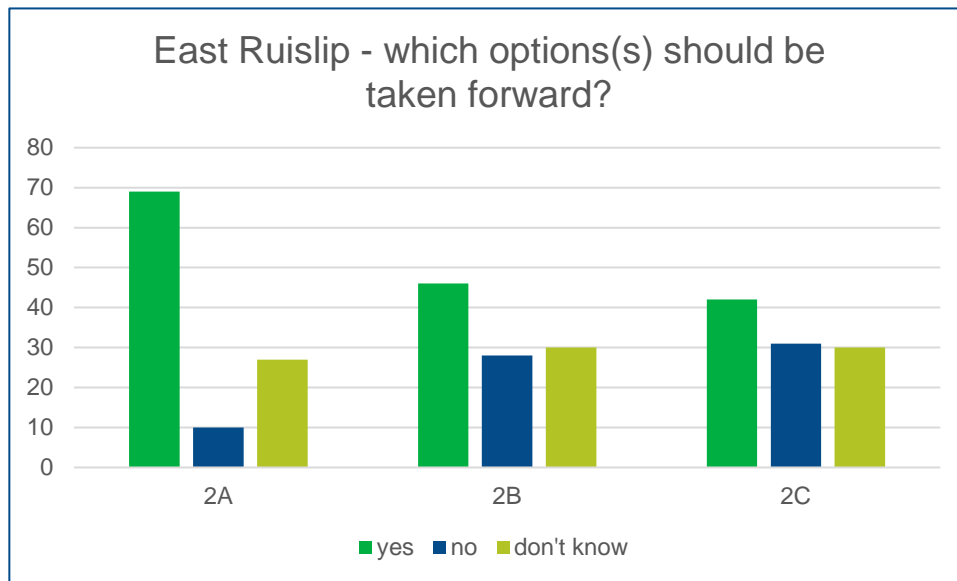
In the East Ruislip area we consulted on 3 different options. We asked respondents to choose all of the options which they believe we should take forward for further analysis and investigations.

Comments about the options

The options we consulted on are in the table below. The questions we asked and maps of the option locations can be found in appendix 6.

Option reference	Option type	Option description
2A	Natural flood management (NFM) and flood storage	Consisting of leaky log dams and other NFM measures to slow flows from ditches draining from Park Woods. Includes an area for flood water storage in the southern area of Park Woods.
2B	Embankment	An earth embankment to retain flood water on the playing fields, in combination with 2C.
2C	New flood storage area	Storage of flood water in parts of Kings College Playing Fields during high river flows.

The most favoured option was option 2A and the least preferred option was option 2C. If we take forward the options for embankments or flood storage in this area then these results show that we will need to engage closely with residents in the area to explain in detail how they will work and how the issues identified will be overcome.



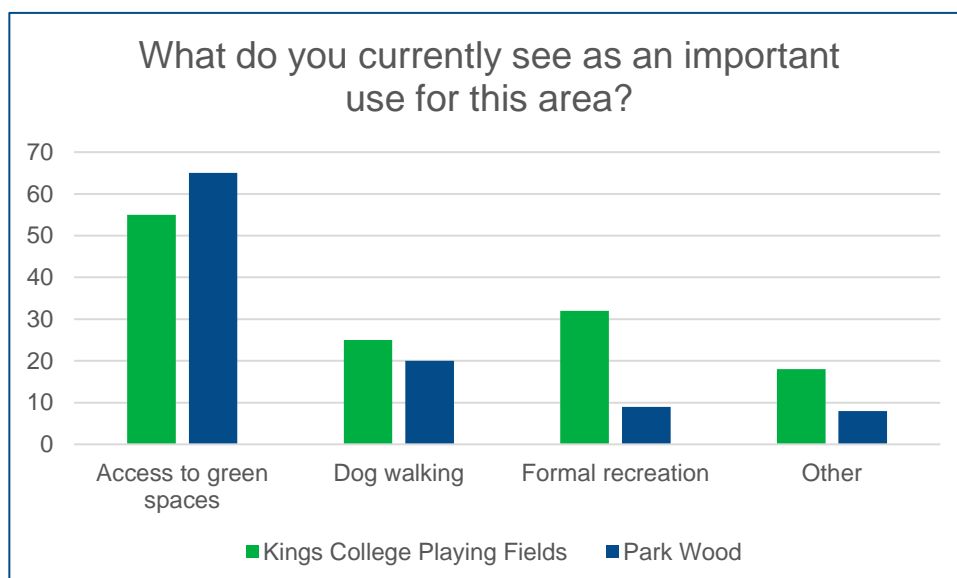
In response to the East Ruislip options only 20-30% of people who answered this question responded "don't know". We believe this is because we have already engaged with some local residents following recent flooding and so they have a better understanding of the potential solutions. We aim to build on this as the project progresses and provide further details on all of the options we decide to take forward.

As natural flood management measures were shown to be the most popular solution in this area, we will work closely with Hillingdon Council and Thames 21 as they progress their project to implement NFM measures in Park Wood.

We will continue to consider a combination of options in this area as the NFM will need to be complemented by other solutions to reduce flood risk across the East Ruislip area.

Comments about current use of the area

We also asked people to tell us whether they currently use the green spaces of Kings College Playing Fields and Park Wood. Of those who answered this question, general access to green spaces was seen as most important.



Other comments on the use of Kings College Playing Fields included:

- using the running track
- informal recreation
- retaining the natural environment for wildlife
- nature studies, picnics, blackberry picking, bat and butterfly studies
- that the fields were bequeathed to the people of Ruislip specifically for recreational purposes

Other comments on the use of Park Wood included:

- pedestrian access to Ruislip Lido
- nature studies, work of Ruislip Woodland Management Trust
- butterfly habitat and wildlife conservation

Other comments

We gave respondents an opportunity to tell us anything else they believed was important when considering options for the East Ruislip area. Other comments included:

- surface water flooding problems along Evelyn Avenue and Brook Drive need to be considered
- Kings College playing fields often gets waterlogged in winter
- concern that a flood storage area would change the natural look of the area
- an embankment at the south of Park Wood is likely to obstruct access to the woods from Broadwood Avenue
- concern that a flood storage area would take water closer to people's homes and be a safety concern for users of the playing fields
- natural solutions are preferable as they will be less destructive to the environment and cheaper than man-made measure
- clearance and maintenance of local ditches to keep them clear is important for local drainage
- drainage from Park Woods is an important factor which needs to be considered in detail
- running track and skate park have recently been restored and need to be protected from flooding
- Joel Street ditch contributes a considerable amount of water to the River Pinn in this area and needs to be considered

"The NFM measures for Park Woods make sense in conjunction with enhancing the ditch.... The main issue here is the ditch and the culvert that runs from Park Wood....These tend to get clogged up with natural debris from the woods, and the culvert entrance is often partially obstructed..."

"The flood prevention proposals for Kings College playing fields are essential to prevent flooding in this area."

"It would be a good idea to contain the river Pinn and to avoid it flooding.... hence the proposed embankment 2b seems a good idea. We are however deeply concerned with where the excess water will be stored...."

West Ruislip

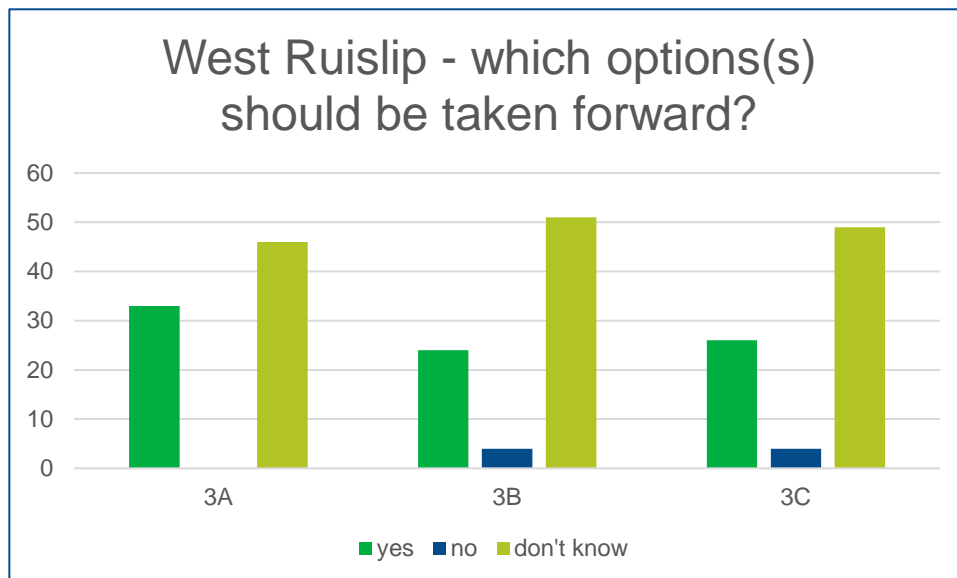
In the West Ruislip area we consulted on 3 different options. We asked respondents to choose all of the options which they believe we should take forward for further analysis and investigations.

Comments about the options

The options we consulted on are in the table below. The questions we asked and maps of the option locations can be found in appendix 6.

Option reference	Option type	Option description
3A	New flood storage area	Storage of flood water in fields to the west of Breakspear Road and south of Fine Bush Lane during high river flows.
3B	New flood storage area	Storage of flood water in fields close to where the Cannon Brook and River Pinn join in Ruislip.
3C	Walls and embankments	A combination of improving current riverside embankments and creating new ones to keep water in the river corridor for longer.

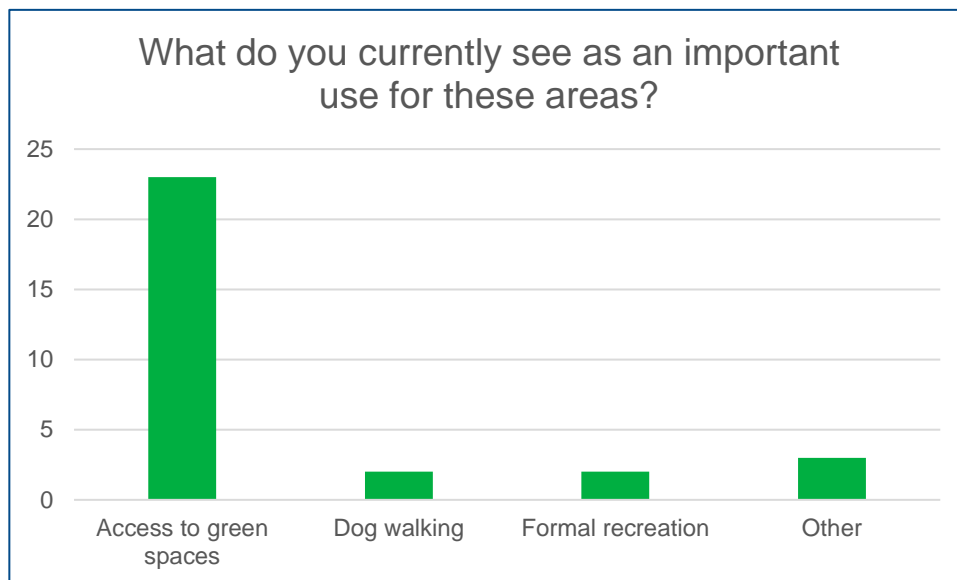
The most favoured option was option 3A and the least preferred option was option 3B.



Over 50% of people who answered this question responded "don't know" to each of the options. This reflects the fact that respondents didn't feel like there was enough information provided to enable them to make an informed decision. As stated in the previous section these are initial ideas and further detail will be available as the project progresses.

Comments about current use of the area

We also asked people to tell us whether they currently use the green spaces where we are proposing options. Of those who answered this question, general access to green spaces was seen as most important.



Other comments on the use of these areas included:

- cycling along Fine Bush Lane and into Mad Bess Woods
- private land
- pedestrian access to West Ruislip station and Ickenham
- working and volunteering along this stretch of river

Other comments

We gave respondents an opportunity to tell us anything else they believed was important when considering options for the West Ruislip area. Other comments included:

- specific measures to increase the flood protection on the Cannon Brook need to be included
- concerns around proximity to a proposed flood storage area and the impacts this could have on access to open spaces, the affect it could have on the view and on insurance premiums
- the Council should review its arrangements for the management of Ruislip Lido water levels

"I would like to see new walls and embankments built along the Celandine route where the Pinn is to help reduce flooding"

"We would need to know further details of the specific measure proposed before fulling understanding the potential effect and therefore commenting."

"...The Council should also review its arrangements for management of Ruislip Lido water levels, including making use of data from the Howletts Lane water level gauge..."

Ickenham

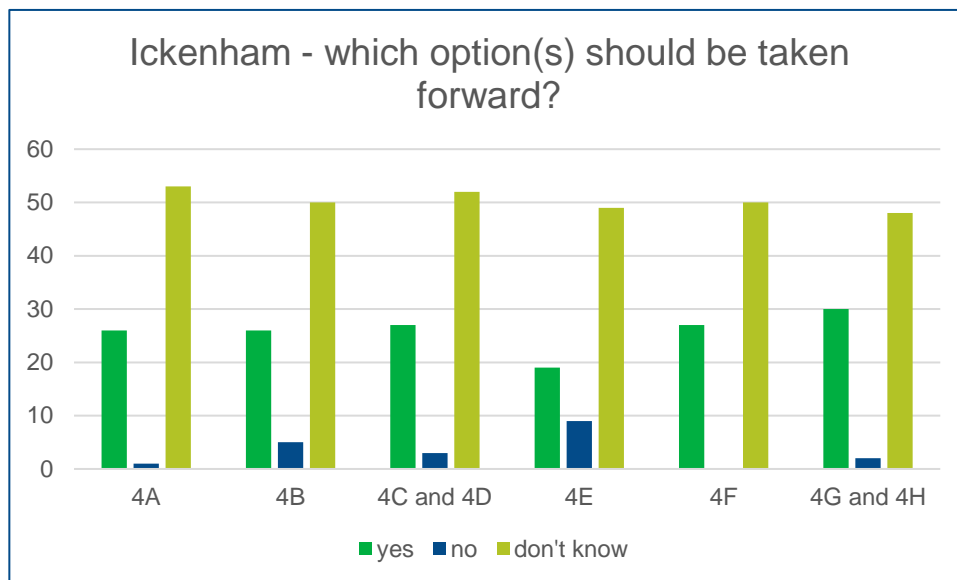
In the Ickenham area we consulted on 6 different options, or combinations of options. We asked respondents to choose all of the options which they believe we should take forward for further analysis and investigations.

Comments about the options

The options we consulted on are in the table below. The questions we asked and maps of the option locations can be found in appendix 6.

Option reference	Option type	Option description
4A	New flood storage area	Utilising open space to the north of the River Pinn, across from Ruislip golf course to store flood water during high river flows.
4B	New flood storage area	Storage of water in fields to the south west of where the railway line crosses the River Pinn during high river flows.
4C and 4D	Walls and embankments	Earth embankments or walls to keep water in the river corridor for longer during high river flows
4E	New flood storage area	Utilising open space in Swakeleys Park to store flood water during high river flows.
4F	New flood storage area	Utilising woodland as an area for flood storage during high river flows.
4G and 4H	New flood storage areas	Utilising open space south of the A40 to store flood water during high river flows.

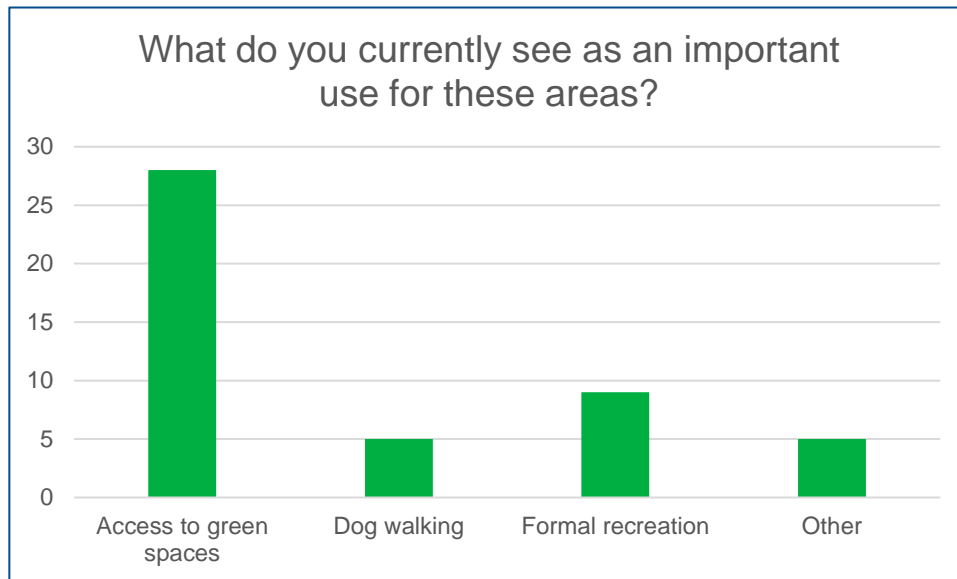
The most favoured options were options 4G and 4H and the least preferred option was option 4E.



Over 60% of people who answered this question responded "don't know" to each of the options. This reflects the fact that respondents didn't feel like there was enough information provided to enable them to make an informed decision. As stated in the previous section these are initial ideas and further detail will be available as the project progresses.

Comments about current use of the area

We also asked people to tell us whether they currently use the green spaces where we are proposing options. Of those who answered this question, general access to green spaces was seen as most important.



Other comments on the use of these areas included:

- 4A and 4B for pedestrian access to Ickenham via Celandine Route
- working and volunteering along the stretch of river
- field important for children and families

Other comments

We gave respondents an opportunity to tell us anything else they believed was important when considering options for the Ickenham area. Other comments included:

- concerns around making sure we are working with HS2 which will go through parts of West Ruislip and Ickenham, particularly relating to options 4A and 4B
- there are opportunities for wetland, river restoration and wet woodlands in this area as long as it is effectively maintained
- there is a long distance Celandine route along the River Pinn which needs to be maintained and improved
- whether Swakeleys Lake could be better utilised for flood storage
- green solutions are preferable to ensure nature is protected as much as households

"I'm sure this has been taken into consideration, but is the proposed storage area 4A not affecting the proposed HS2 route?"

"....could be greatly improved with a series of ponds and scrapes in this area....Excellent opportunity to look at a wooded wetland here."

"....Adding embankments as suggested in 4C & D would not be suitable unless the additional storage options were also undertaken."

Hillingdon and Uxbridge

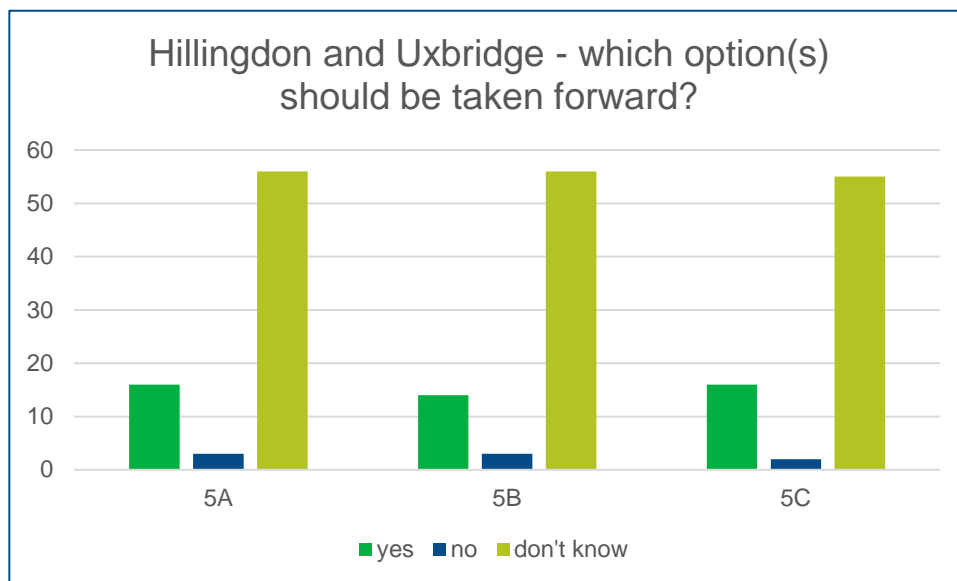
In the Hillingdon and Uxbridge areas we consulted on 4 different options. We asked respondents to choose all of the options which they believe we should take forward for further analysis and investigations.

Comments about the options

The options we consulted on are in the table below. The questions we asked and maps of the option locations can be found in appendix 6.

Option reference	Option type	Option description
5A	Walls and embankments	Construction of an embankment to reduce the risk of flooding to properties locally.
5B	Walls and embankments	Construction of an embankment to reduce the risk of flooding to Brunel University.
5C	New flood storage area	Utilising open space to the south of Brunel University to store flood water during high river flows.
5D	Walls and embankments	Construction of an embankment to reduce the risk of flooding to properties locally.

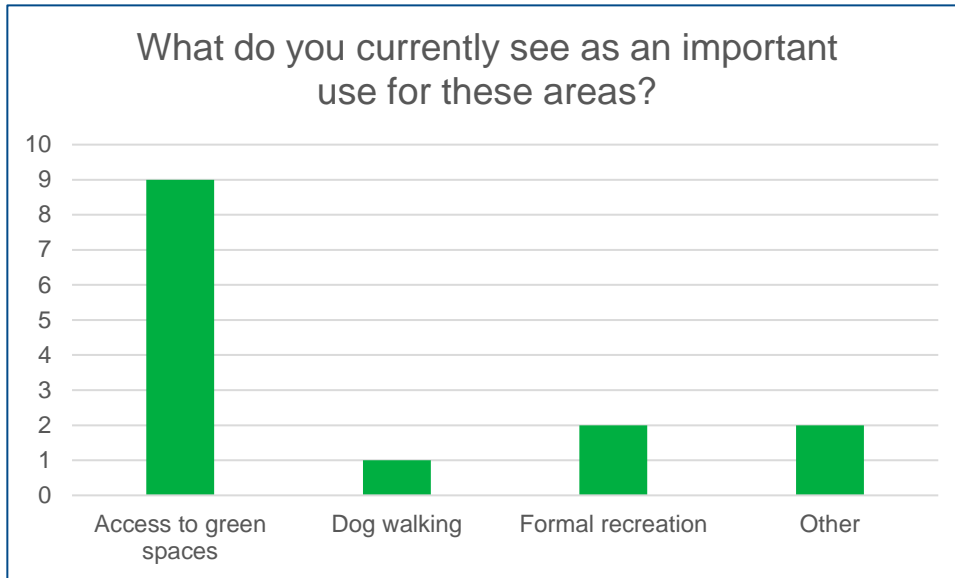
The most favoured options were options 5A and 5C and the least preferred option was option 5B. However, these options all had very similar numbers of respondents who voted in favour of them.



A large proportion, over 70%, of the people who responded to this question responded "don't know" to each of the options. This reflects the fact that respondents didn't feel like there was enough information provided to enable them to make an informed decision. As stated in the previous section these are initial ideas and further detail will be available as the project progresses. We will also need to do some more targeted engagement in these areas where we had less attendees to the drop-in sessions, and therefore less people who were familiar with the area responding to the consultation.

Comments about current use of the area

We also asked people to tell us whether they currently use the green spaces where we are proposing options. Of those who answered this question, general access to green spaces was seen as most important.



Other comments

We gave respondents an opportunity to tell us anything else they believed was important when considering options for the Hillingdon and Uxbridge areas. Other comments included:

- options 5B-D are within Brunel footprint and this is a great opportunity to fit in with Brunel development plans improving their campus
- around option 5A there is an existing embankment here protecting properties, which is visible from site visits and needs to be better understood
- a suggestion for 5B that we should consider a more naturalised channel rather than embankments
- around option 5D there is an ordinary watercourse running into the River Pinn which needs to be considered

"...Our garden is immediately adjacent of part of the embankment shown as 5D"

"....this is a great opportunity to fit in with Brunel development plans improving their campus. It would be a shame to put the river into a gully when it could be a feature. It would be good to involve the Environmental Sciences faculty with plans....with natural areas around the river being a feature rather than a drain."

"The river can rise very rapidly to the south of that area and allowing for the storage here and further upstream will reduce the potential for flooding of properties and gardens."

Yiewsley

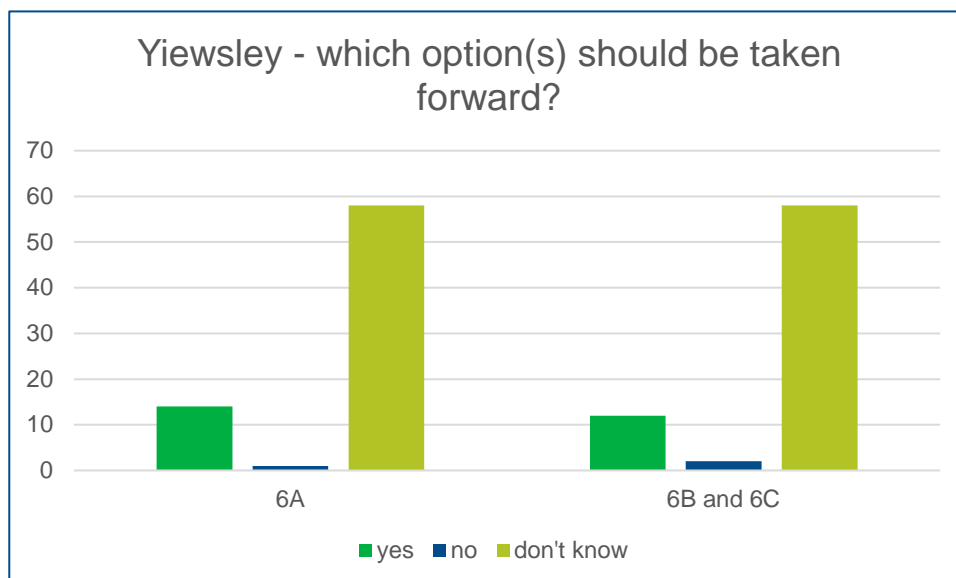
In the Yiewsley areas we consulted on 2 different options or combinations of options. We asked respondents to choose all of the options which they believe we should take forward for further analysis and investigations.

Comments about the options

The options we consulted on are in the table below. The questions we asked and maps of the option locations can be found in appendix 6.

Option reference	Option type	Option description
6A	New flood storage area	Utilising open space south of Church Road to store flood water during high river flows on both sides of the river.
6B and 6C	Walls and embankments	Construction of embankments through open space and along the perimeter of Grange School to reduce the risk of flooding to the school and properties locally.

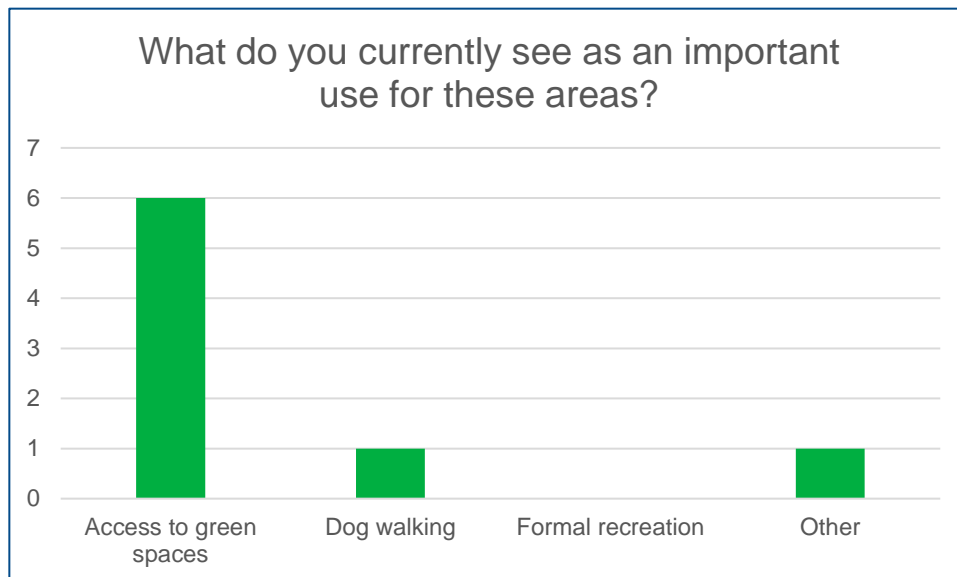
The most favoured option was option 6A. However, these options both had a very similar number of respondents who voted in favour of them.



A large proportion, over 75%, of the people who responded to this question responded "don't know" to each of the options. We think this reflects the fact that respondents didn't feel like there were enough information, or they weren't familiar with the area. As stated in the previous section these are initial ideas and further detail will be available as the project progresses. We will also need to do some more targeted engagement in these areas where we had less attendees to the drop-in sessions, and therefore less people who were familiar with the area responding to the consultation.

Comments about current use of the area

We also asked people to tell us whether they currently use the green spaces where we are proposing options. Of those who answered this question, general access to green spaces was seen as most important.



Other comments

We gave respondents an opportunity to tell us anything else they believed was important when considering options for the Hillingdon and Uxbridge areas. Other comments included:

- flood storage 6A - concern that it would stop access along Celandine Route
- there may be Brunel university land ownership in the area so we should work with them
- a better flood storage area maybe south of this indicated area where there are a series of ditches and ponds that are in need of restoration, just south of Heather Lane entrance to Philpots farm Meadow
- there is a small stream from Clarkes Drive through inaccessible scrub that could be improved for flood storage
- the walls and embankments in 6C and 6B are mostly away from river, so if naturalised might be ok
- after 6C, just as river goes under Grand Union canal there is a sump and trash screen which is always full of rubbish giving potential for flood risk
- the lower end of option 6A does already work as a flood plain when the river is out of banks but it does require management

"I would like to suggest that work is also required at the point where the River Pinn flows under the Grand Union Canal....The area is plagued with fly tipping, often in the river and that could result in further blockage of the culverts which need to be kept totally clear to ensure an unobstructed flow."

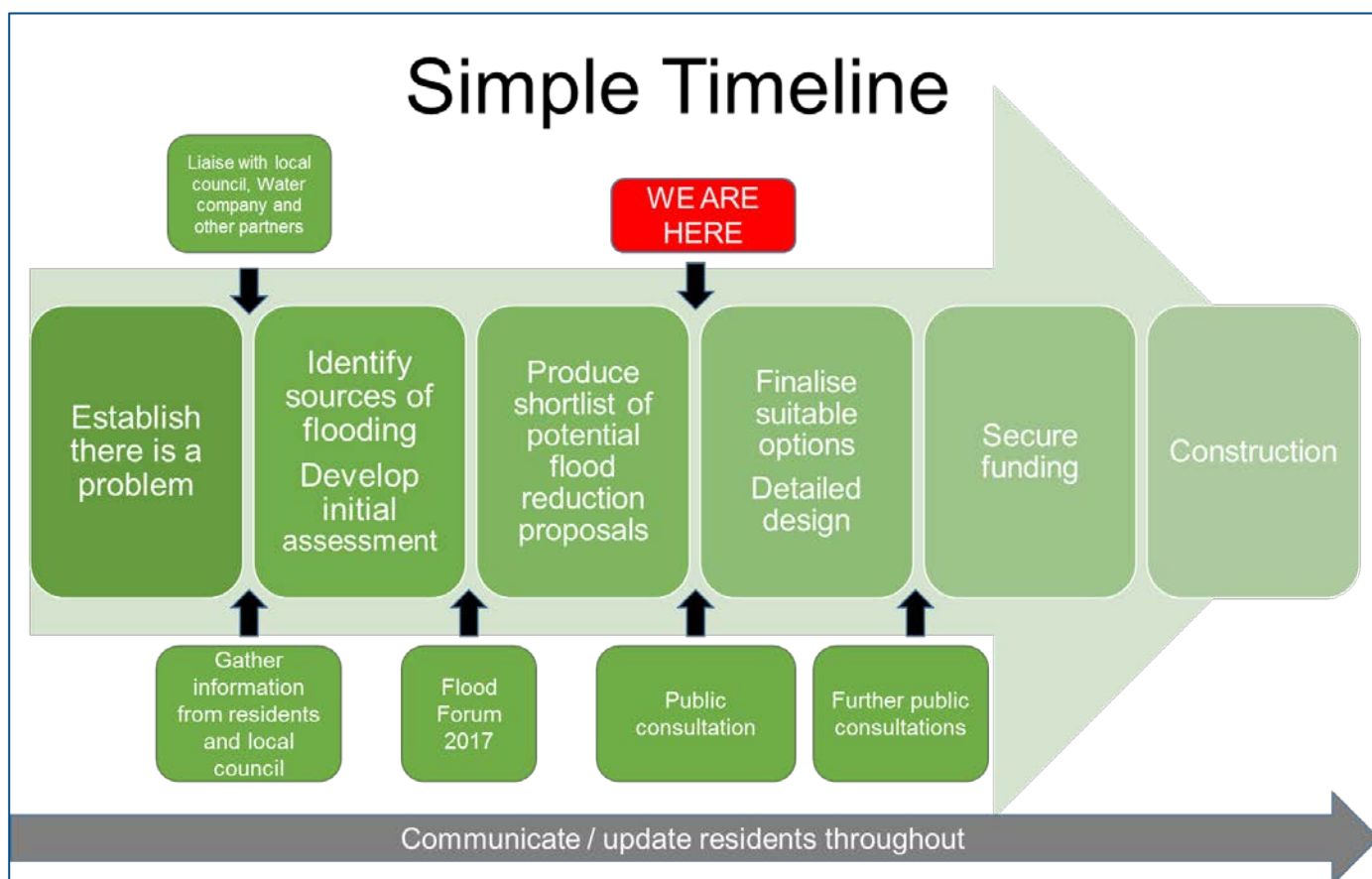
6. Making use of the feedback

Following the consultation, we are carrying out further work to determine the preferred options to take forward for further assessment.

As part of this process, we are reviewing all comments made and will ensure they feed into the options appraisal process. We have also published all the responses we received on our website at: <https://consult.environment-agency.gov.uk/hnl/river-pinn-and-cannon-brook-consultation>

We will use the feedback to assess how popular the various options are with the general public and the responses to the consultation is one factor which will feed into our analysis of the proposed options. We will also look at technical considerations, environmental and social impacts to develop the options further and determine which are the most appropriate to take forward for further analysis. We currently plan to complete this analysis and share our preferred options in Spring 2019. This is subject to change and we hope to be able to share information sooner than this dependent on the progress of the project through the next stage of analysis.

The diagram below shows a simple summary of the project timeline with the different stages and points at which we will undertake formal consultation.



There will be further opportunity for public comments when we hold our next consultation, currently planned for spring 2019. In the shorter term we will continue to produce quarterly briefing notes to provide updates to interested communities. We will engage directly with flood action groups who are providing us with vital local input into the options as we develop them further. We will be setting up a dedicated website for the project so that anyone interested can find the latest information.

Anyone who is not already on our mailing list but would like to be can email HNL-PSO@environment-agency.gov.uk and request to be added.

7. Appendices

The following appendices can be found as separate documents alongside this one on our website:

[Appendix 1 - Pinner event leaflet](#)

[Appendix 2 - Ruislip event leaflet](#)

[Appendix 3 - Uxbridge event leaflet](#)

[Appendix 4 - feedback form](#)

[Appendix 5 - summary of feedback from drop-in events](#)

[Appendix 6 - consultation questions](#)

**Would you like to find out more about us
or about your environment?**

Then call us on

03708 506 506 (Monday to Friday, 8am to 6pm)

email

enquiries@environment-agency.gov.uk

or visit our website

www.gov.uk/environment-agency

incident hotline 0800 807060 (24 hours)

floodline 0345 988 1188 (24 hours)

Find out about call charges (www.gov.uk/call-charges)



Environment first: Are you viewing this on screen? Please consider the environment and only print if absolutely necessary. If you are reading a paper copy, please don't forget to reuse and recycle if possible.