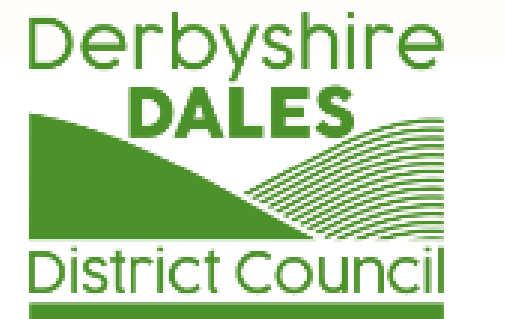


Matlock Bridge Closure



Environment
Agency

in partnership with



The Environment Agency, Derbyshire County Council and Derbyshire Dales District Council are working together to manage the risk of flooding from the River Derwent following collapse of a wall behind businesses in Crown Square, Matlock after the February storms.

To enable the construction of a replacement flood wall, it's essential that Matlock Bridge is closed to all traffic (pedestrians, cyclists and vehicles) from **7am on Monday 13 June 2022** until early August 2022. We apologise in advance for any temporary inconvenience caused by the bridge closure.

We'll be making temporary alterations to Matlock Bridge to allow two-way traffic over the bridge for up to 18 months.

Once the temporary alterations to the bridge are complete, the A6 at Derwent Way will be closed so a large crane can be situated on the road to carry out the necessary work on reinstating the flood defences. All traffic going north and south bound will then be able to use Matlock Bridge.

Whilst the temporary highway work is being done pedestrians should use the footbridge in Hall Leys Park for alternative access across the River Derwent.



We apologise for any inconvenience caused by these works. If you have any questions, please visit the project website at: <https://consult.environment-agency.gov.uk/east-midlands/matlock/> or use this QR code

Matlock Bridge Heritage

The old stone bridge over the River Derwent at Matlock has seen many alterations since it was built in the medieval period to accommodate changes in traffic. It is believed that originally a simple ford further downstream would have allowed people to cross the river. This location may be referenced in the AD 1086 Domesday Survey with the placename 'Mestesforde' – the river crossing and settlement associated with Nestes mine, now known as the Heights of Abraham. By the 13th century a bridge 'Pontem de Matelocke' stood upstream of Mestesforde.



Watercolour painting by William Turner in 1794.

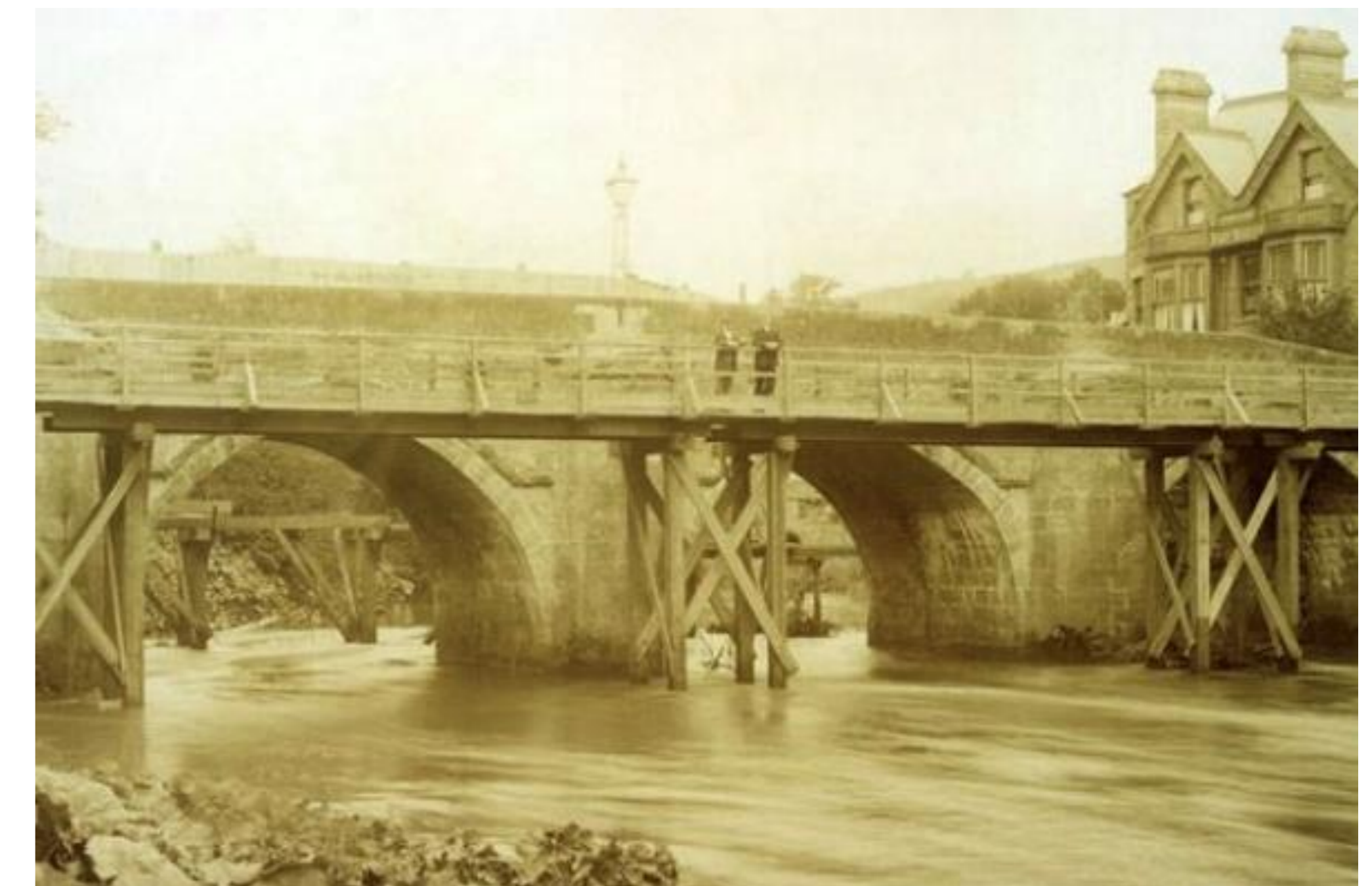


1879 Ordnance Survey Map.



Matlock Bridge in 1903 before widening.

As the town of Matlock expanded, a new bridge was constructed at Matlock Bridge to carry people and goods across the river. The south-eastern part of the bridge dates to the mid-13th century with modification in the 15th century. From the late 19th century, the town became a popular spa destination, and a survey of traffic in August 1894 recorded around 1000 vehicles and 9000 people were crossing the bridge in a day. In 1904 the bridge was widened to accommodate two-way traffic until 2007.



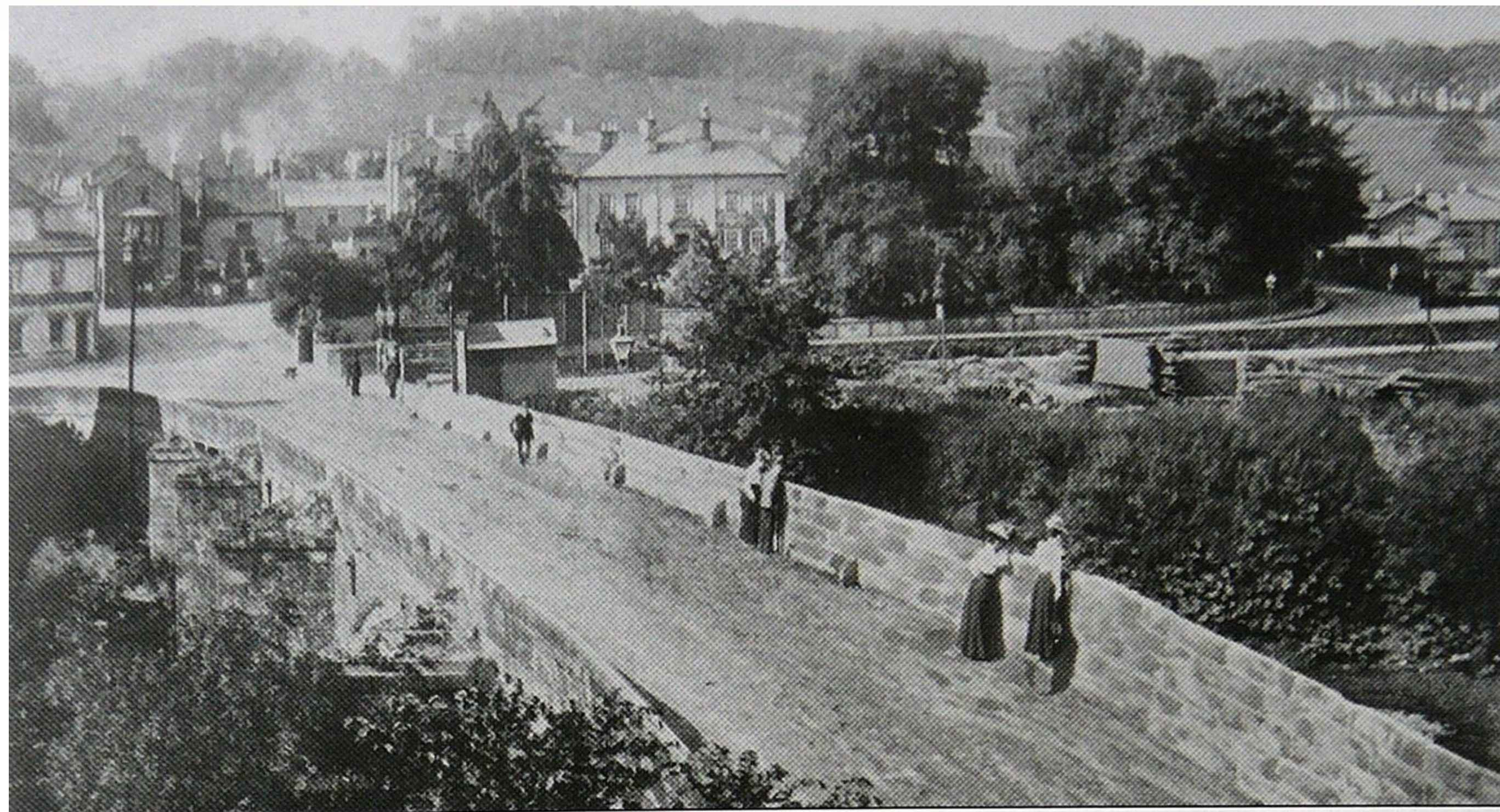
Works to widen Matlock Bridge 1903-4.

The bridge is of national importance and is both grade II* listed and a scheduled monument located within the Matlock Bridge Conservation Area. The Environment Agency is working closely with Derbyshire County Council and Historic England to ensure the bridge is protected during works to temporarily reinstate two-way traffic to facilitate repair of the flood wall to the north.

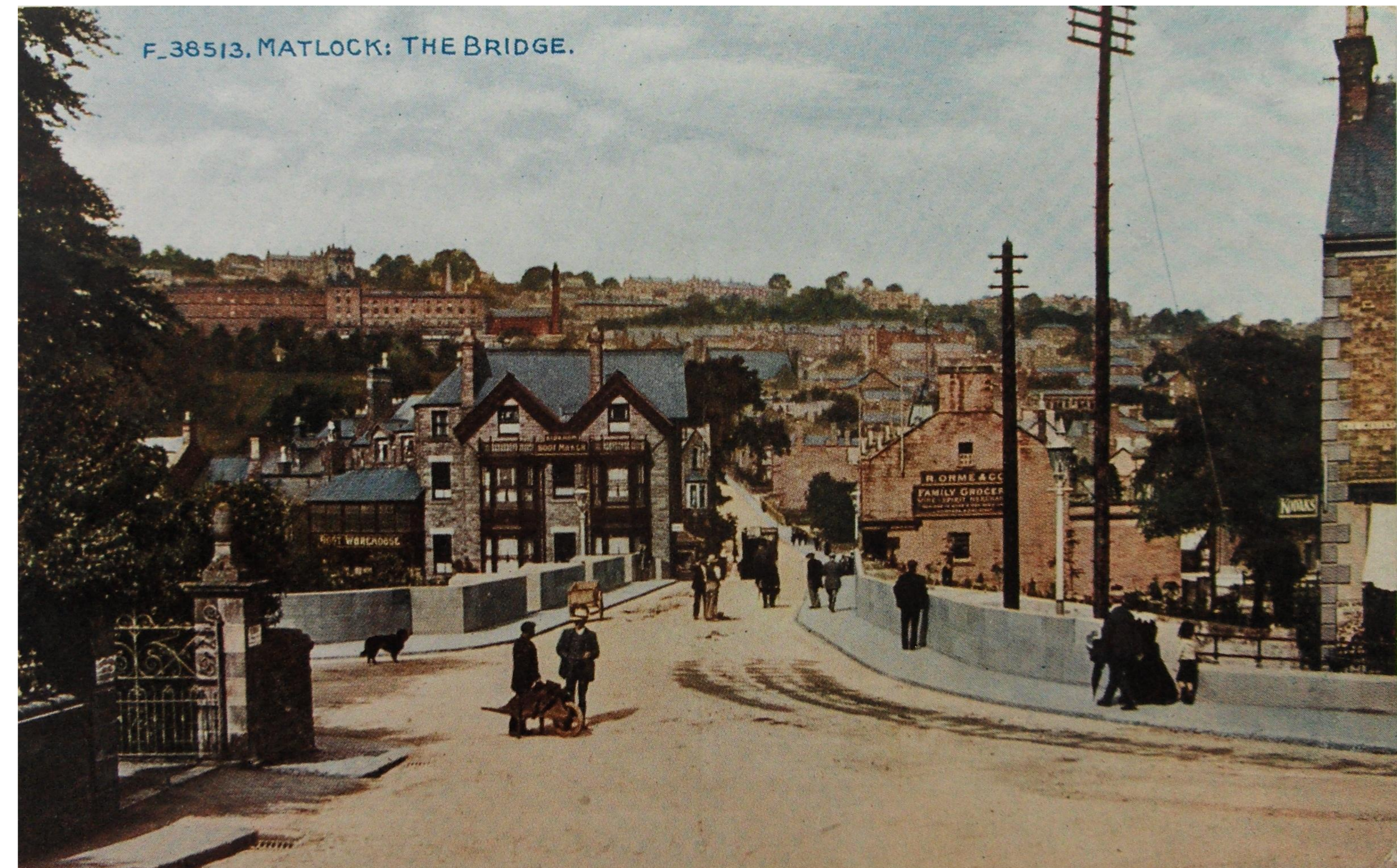
We apologise for any inconvenience caused by these works. If you have any questions, please visit the project website at: <https://consult.environment-agency.gov.uk/east-midlands/matlock/> or use this QR code



Matlock Bridge History in Pictures



Matlock Bridge before and after widening (1904)



'Matlock – the Bridge' Celesque series by Polychrom Co. Ltd.

Photographs kindly supplied by
Matlock Civic Association

