

## Environmental Update – Autumn 2022



Jackson Civil Engineering are working on behalf of the Environment Agency to build a replacement flood defence at Matlock in Derbyshire and reinstate flood protection from the River Derwent. Our project is being delivered in partnership with Derbyshire County Council and Derbyshire Dales District Council. Our goal is to create a better place for people and wildlife.

Back in March 2022, a number of riverside trees were felled to facilitate the flood defence works. The wood from the felled trees was used to create habitat piles at Derbyshire County Council’s Black Rocks Nature Reserve (*photo above*). As a partnership, we’re committed to planting 5 trees to compensate for every 1 tree felled. We’ve prepared this newsletter to let you know about some of the environmental enhancements happening in the local community.

On 4 November, 12 established oak trees were planted alongside the A6 to create an oak avenue to welcome people into Matlock from the north. The project team are extremely grateful to Councillor Steve Wain, Councillor Martin Burfoot and Councillor Sue Burfoot for lending a hand with the tree planting. A further 30 aspen trees have been donated to Derbyshire County Council for planting at Grassmoor Memorial Parkland to honour those lost to Covid.



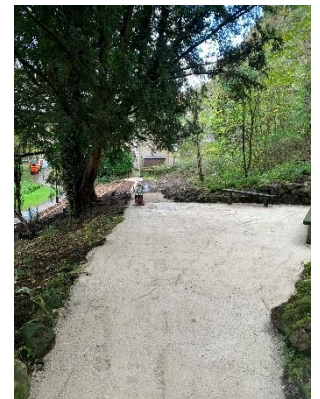
We’ve been busy making enhancements to the award winning Hall Leys Park. The timber edges to the flower beds in the sunken garden had begun to deteriorate following previous flood events. These have been replaced with kerbstones so they’re more durable and the ornamental plants will be replaced with native species from spring 2023 to attract pollinators.



On 19 October, we were joined in Hall Leys Park by Year 3 and 4 students from Castle View Primary School park who helped us plant a new wildflower area along the River Derwent. They did an awesome job and some of the seedlings are starting to grow!



We've also re-landscaped Knowleston Gardens to make the space more accessible for the volunteers that kindly maintain it, and enable the space to be developed into a future community space.



Thanks from the site team to all our partners at Derbyshire County Council, Derbyshire Dales District Council and Matlock Town Council for helping us to create a living legacy by delivering more for the environment. We're planning further environmental enhancements and so watch this space to find out more about projects such as Ashton's Tree and tree works at Cavendish Playing Fields. In the meantime, we love to receive feedback and details on how you can get in touch with us are below.



## Contact Us

If you have any questions or concerns about this project, please contact our Public Liaison Officer: Kathryn Battelle via email [kbattelle@jackson-civils.co.uk](mailto:kbattelle@jackson-civils.co.uk) or call 07970 159492.

If you would like to be added to our mailing list to receive future updates about this scheme, please contact us through the email address.

To find out more about this project, please visit the project information page at:

[www.consult.environment-agency.gov.uk/east-midlands/matlock/](http://www.consult.environment-agency.gov.uk/east-midlands/matlock/)

or use this QR Code

Follow us on twitter [@JacksonCivils](https://twitter.com/JacksonCivils) and [@EnvAgencyMids](https://twitter.com/EnvAgencyMids)



## Improving the image of Construction

**We are considerate constructors**



We are registered with the Considerate Constructors Scheme  
Call: 0800 783 1423 visit: [www.ccscheme.org.uk](http://www.ccscheme.org.uk)



The Considerate Constructors Scheme was setup to improve the image of the construction industry. The scheme aims to encourage best practice beyond statutory requirements and show the industry to be a considerate one. Our site has signed up to the scheme. **Site Reference: 132104**