

# Coggeshall, Feering & Kelvedon Flood Alleviation Scheme

## **Viewpoint 1: Public Footpath 72/35 (Essex Way) East of Curd Hall**

The viewpoint is located on the Essex Way (Long-distance recreational route) east of Curd Hall, looking in an easterly direction over the flood storage area. Due to rising ground the easterly views are relatively enclosed and are generally limited to a maximum distance of approximately 500m. Within this confined visual envelope, the only notable feature is the Essex Way which follows a gappy hedge along the field boundary and the willow plantation in the low-lying land to the north (Blackwater valley) which further increases the sense of enclosure.

## **Viewpoint 4: Cuthedge Lane east of Deeks Cottage (Junction of Public Footpath 67/53 Public Bridleway 72/81)**

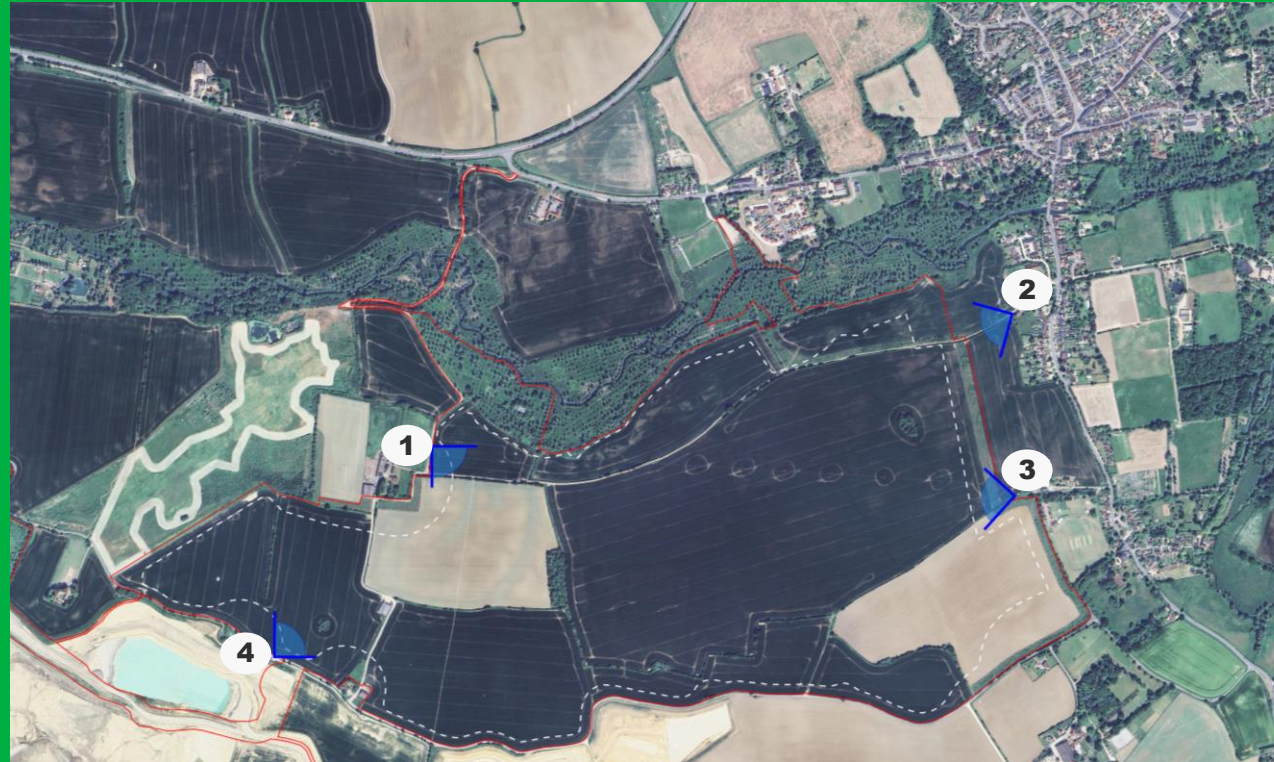
The viewpoint is located on the southern boundary of the flood storage area at the junction of Cuthedge Lane and Public Footpath 67/53, approximately midway between Deeks Cottage and Haywards. The view is looking northeast across open arable fields within the flood storage area.

The grain store to the north of Haywards and trees/woodland at Curd Hall in the middle distance obstruct some long-distance views to the higher ground north of the Blackwater valley. Overhead powerlines along Cuthedge Lane detract from the rural views.

To the south of Viewpoint 4, views are completely obstructed by the temporary screening bunds and straw bale walls, along the boundary of the Site A3 and A4 areas of Bradwell Quarry to the south of Cuthedge Lane.

## **Photomontages have been produced from the following locations:**

- Viewpoint 1: Public Footpath 72/35 (Essex Way) East of Curd Hall;
- Viewpoint 2: Essex Way/Public Footpath 72/34;
- Viewpoint 3: Public Footpath 72/39 Coggeshall Hamlet; and
- Viewpoint 4: Cuthedge Lane east of Deeks Cottage;



**The photomontages illustrate the existing situation, the operational phase and the post restoration views, 15 Years after the site has been restored.**

## **Viewpoint 2: Essex Way/ Public Footpath 72/34**

The viewpoint is located on the Essex Way/ Public footpath 72/34, approximately 115m from the B1024 in Coggeshall. The view is looking west along the Essex Way which is partially enclosed by a mature hedgerow and by an earth embankment along the northern edge. Where gaps in the hedgerow allow, views across farmland are limited by higher ground the flood storage area. Newly planted trees designed to screen the proposed quarrying operations across the flood storage (subject to approval) area are visible on the skyline. These views are similar to those experienced by residents of the adjacent properties (West of the B1024), which are oriented towards the B1024, although westerly views from the rear of the properties are orientated towards the site, but are partially screened by garden vegetation. Coggeshall Grange Barn (Grade I Listed Building) is located north east of the viewpoint, but views into the site from this location are screened by an intervening hedgerows and walled garden.

## **Viewpoint 3: Public Footpath 72/39 Coggeshall Hamlet**

The viewpoint is located on public footpath 72/39, west of the electricity substation at Coggeshall Hamlet (near to Coggeshall Cricket Club). Rising ground to the west and southwest prevents long-distance views across the existing arable land and the majority of views into the flood storage area. The middle-distance skyline is punctuated by frequent overhead transmission lines and by isolated groups of trees, along with the remnants of a hedgerow adjacent to the footpath. Recently planted native woodland belts to the south and west of the footpath viewpoint will provide further containment of the views once established, although the young sapling trees are not currently tall enough to screen the open views.