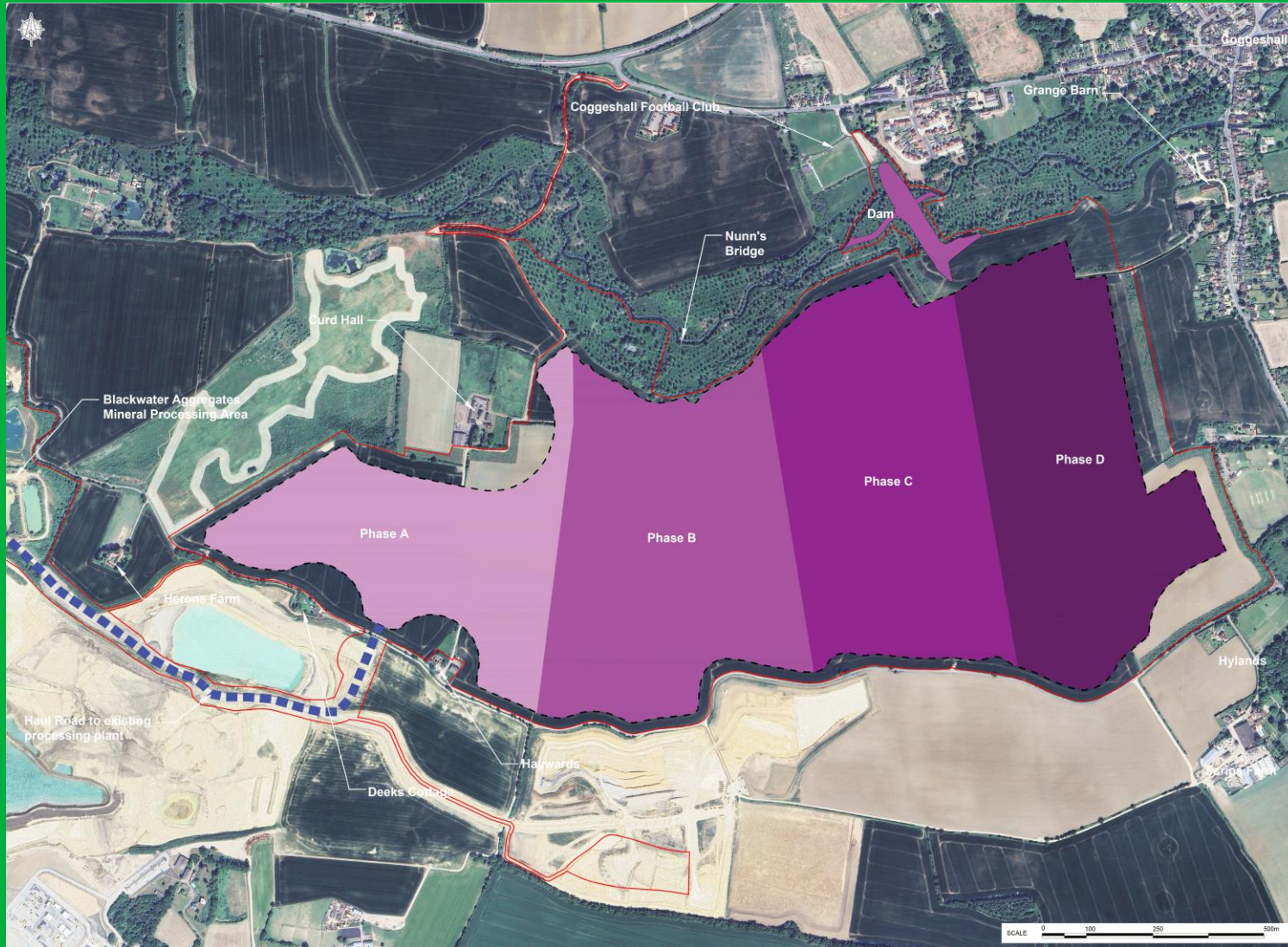


Coggeshall, Feering and Kelvedon Flood Alleviation Scheme



It is proposed that Blackwater Aggregates' quarrying operations would progress across the southern side of the Blackwater valley in a phased and systematic manner, to create the 41ha flood storage adjacent to the River Blackwater over a period of approximately 20 years.

The proposed quarrying and restoration operations would be carried out by Blackwater Aggregates on a rolling basis, phase by phase. Each phase would be restored as soon as practicable following mineral extraction.



The land would be restored back to agricultural use alongside a network of ecologically biodiverse features within the local landscape such as the floodplain grassland adjacent to the River Blackwater, wildflower field margins and interconnected hedgerows and woodlands.

Quarrying operations would progress in an easterly direction across the site. Views of the quarry from Coggeshall will be screened by unexcavated phases of the works and perimeter screening bunds.

The quarry will operate some distance away from properties with screening and dust suppression to reduce any potential dust impact. During the 20-year construction period it is only in the final phase that the works are at their closest point, within 150m of two properties to the west of Coggeshall (off Kelvedon Road near the Cricket Club). The quarrying operations would be carried out during the day on weekdays and Saturday mornings.

The dam will be constructed more than 200m from the existing residential properties along West Street, and approximately 40m from the closest residential properties along Thompson Gardens on the Dutch Nursery development site.