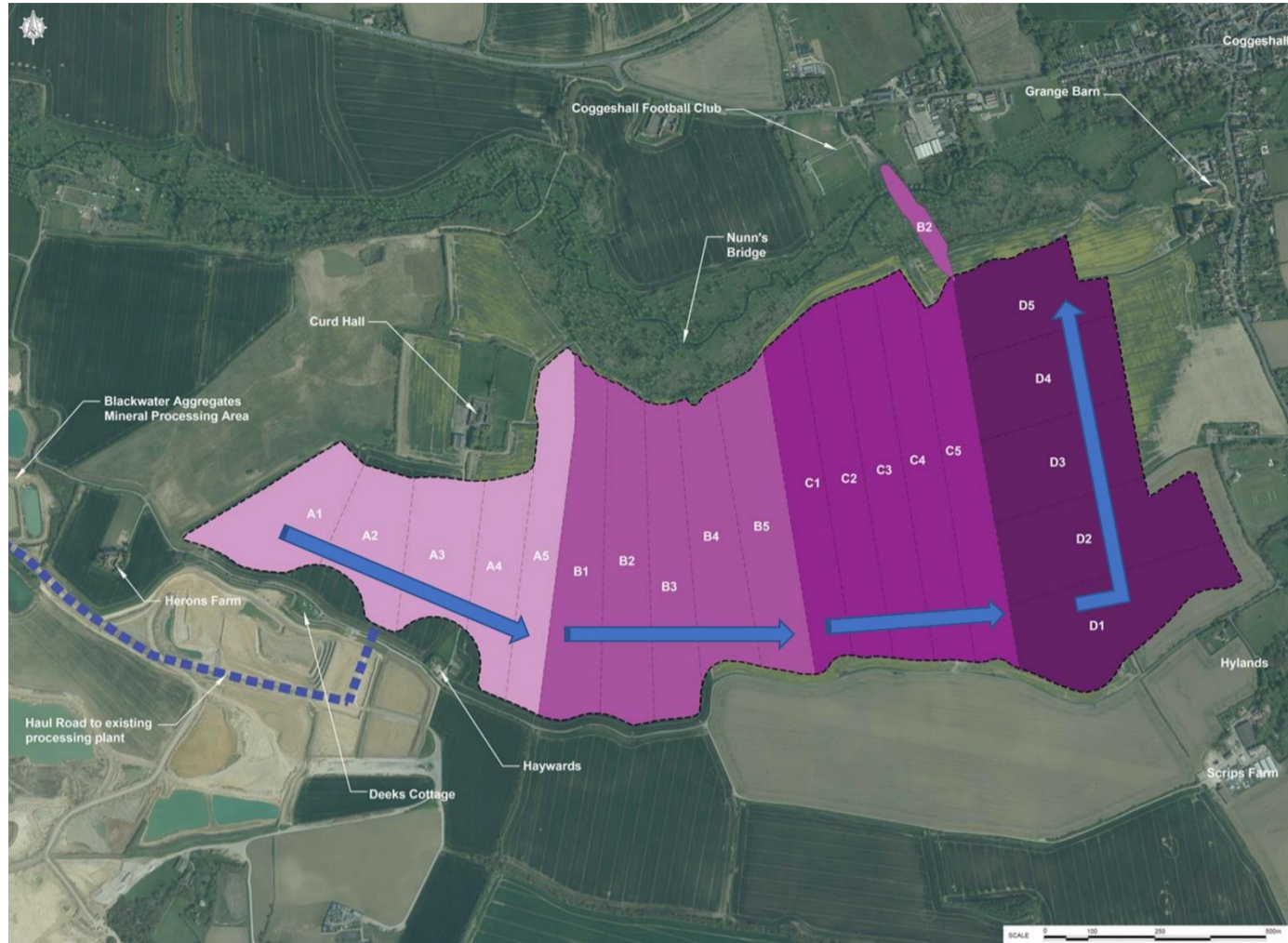


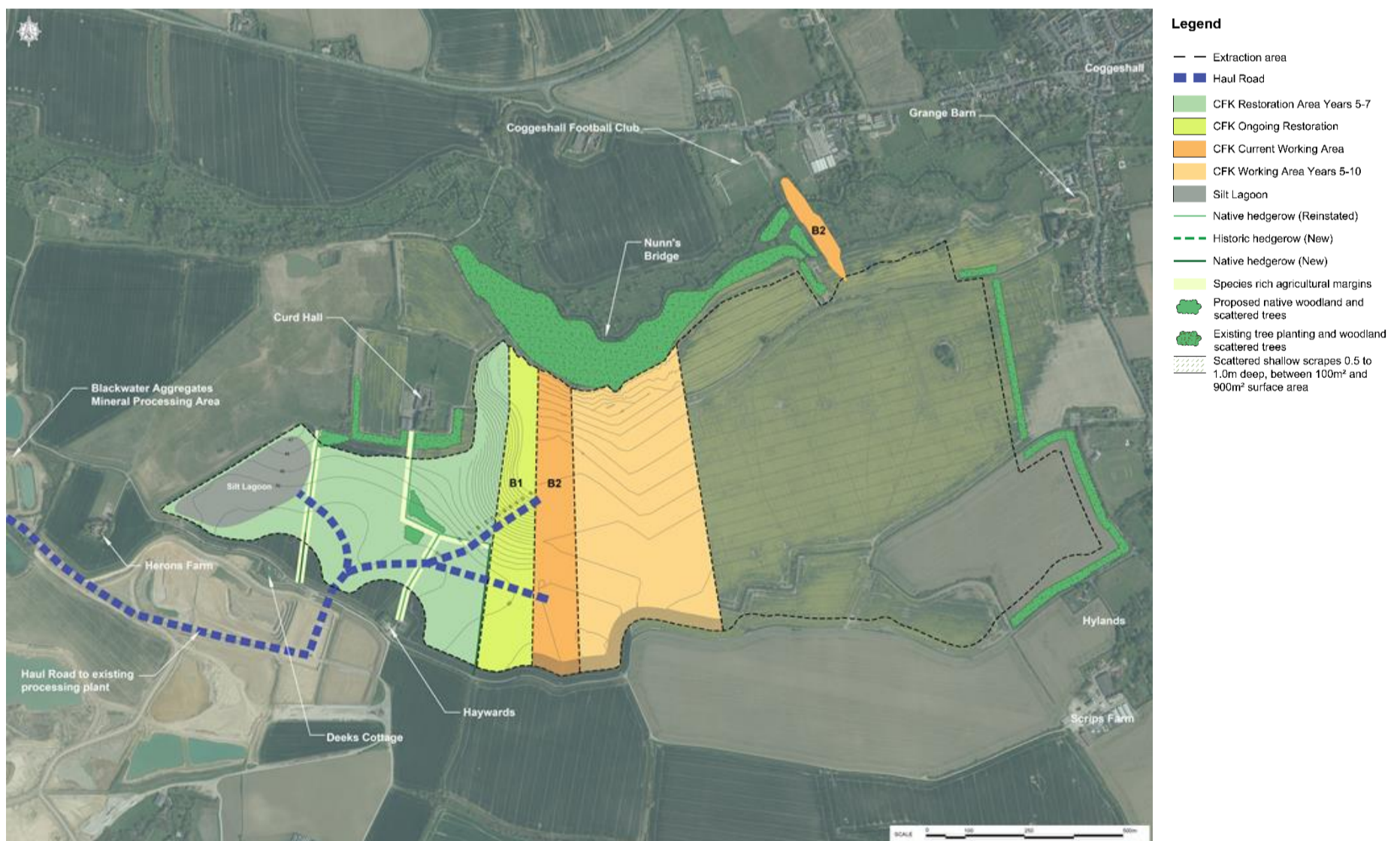
Coggeshall, Feering & Kelvedon Flood Alleviation Scheme

Within each phase, a 'rolling' programme of excavation and restoration will be carried out by subdividing the phase into five working areas (sub-phases).



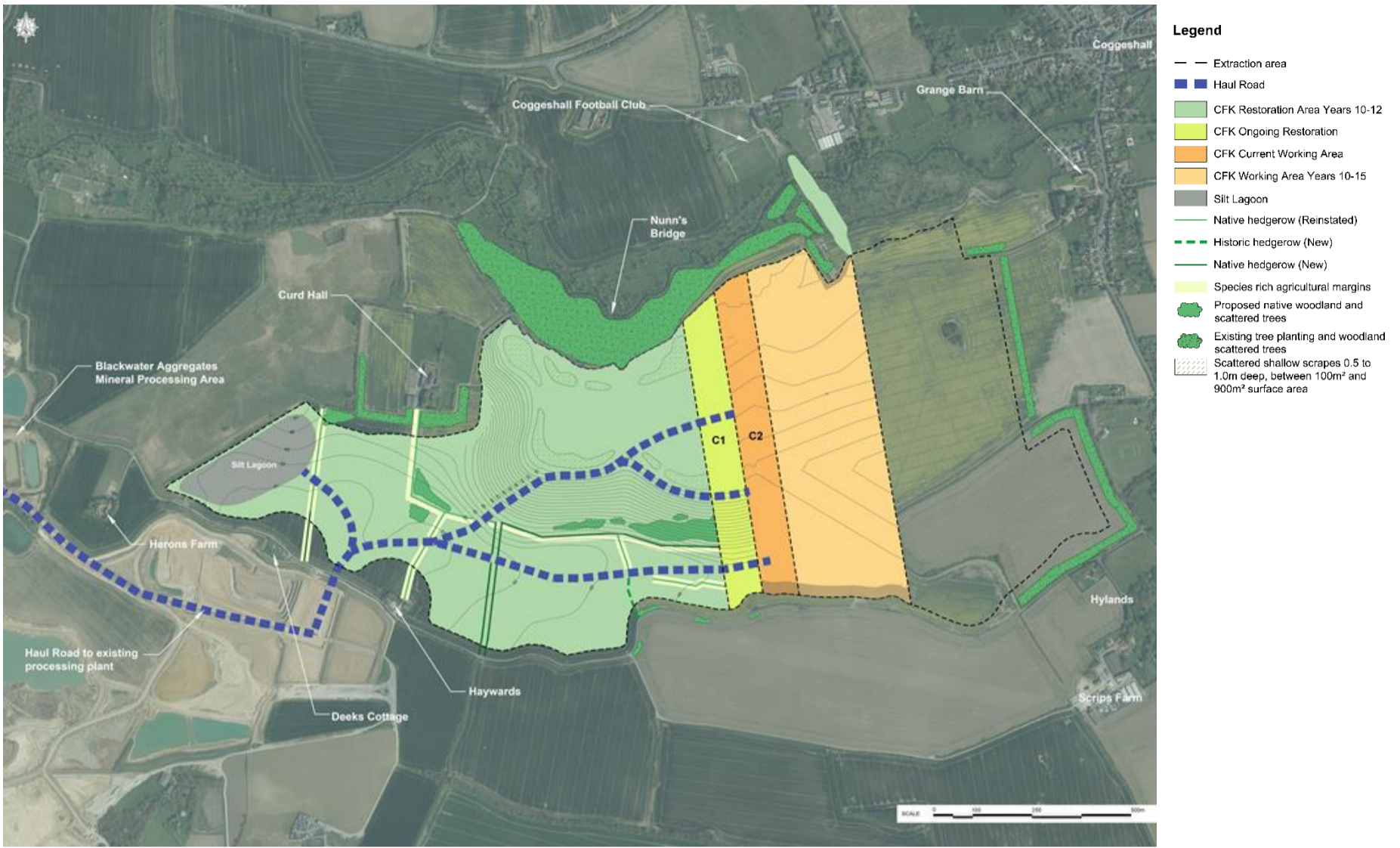
Phasing of direction of the quarrying operations.

Quarrying operations would progress in a planned and systematic manner in an easterly direction from the boundary of the former Coggeshall Quarry across Phases A, B and C towards Coggeshall. As the works progress across the site views from Coggeshall will be screened by unexcavated phases of the works and perimeter screening bunds.



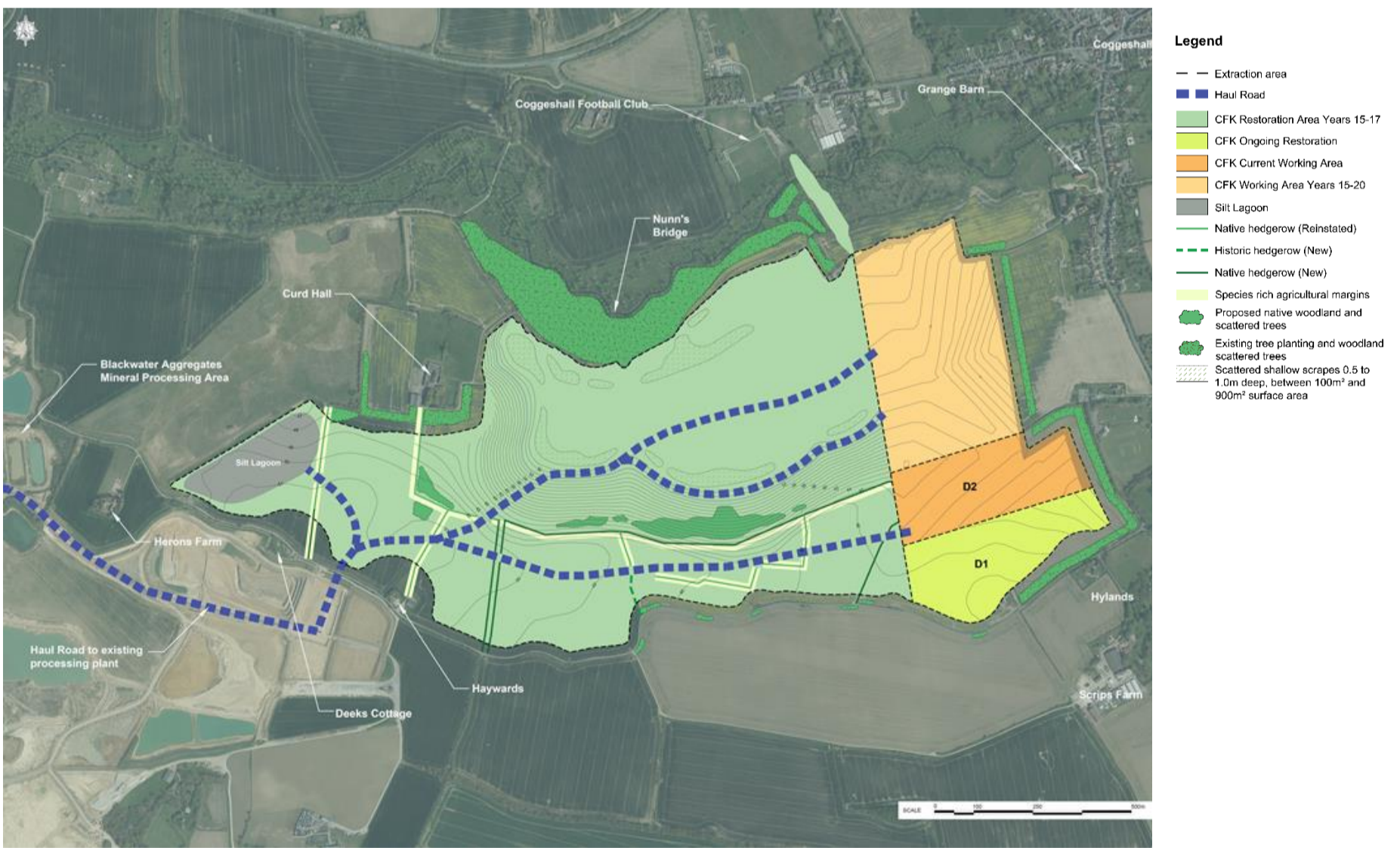
Restoration of Phase A as quarrying operations progress through Phase B in an easterly direction.

Coggeshall, Feering & Kelvedon Flood Alleviation Scheme



Restoration of Phases A and B as quarrying operations progress through Phase C in an easterly direction.

As the quarrying operations approach Coggeshall, they will turn and head in a northerly direction along the eastern side of the site and progress from Cuthedge Lane towards the River Blackwater.



Restoration of Phases A, B and C as quarrying operations progress through Phase D in a northerly direction.

This proposed phasing sequence will ensure that materials from overburden stripping can be utilised in the restoration of extraction areas.