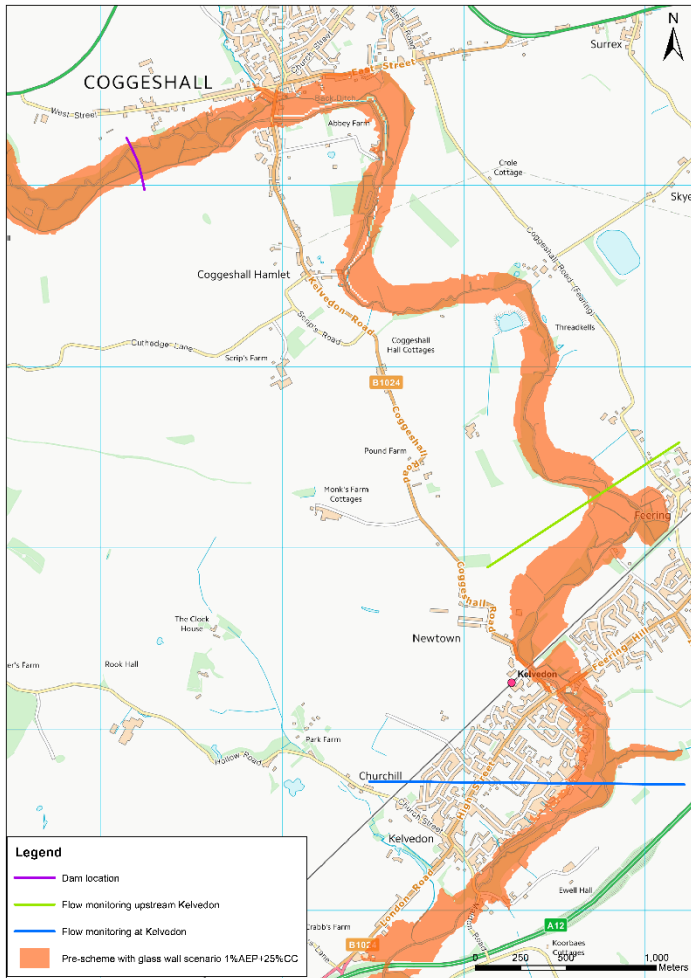


Coggeshall, Feering & Kelvedon Flood Alleviation Scheme

Flood Modelling of a 1 in 100 Year Event



Modelled 1 in 100 Year Flood Event without the Scheme

Modelling Data Outputs for a 1 in 100 Year Event

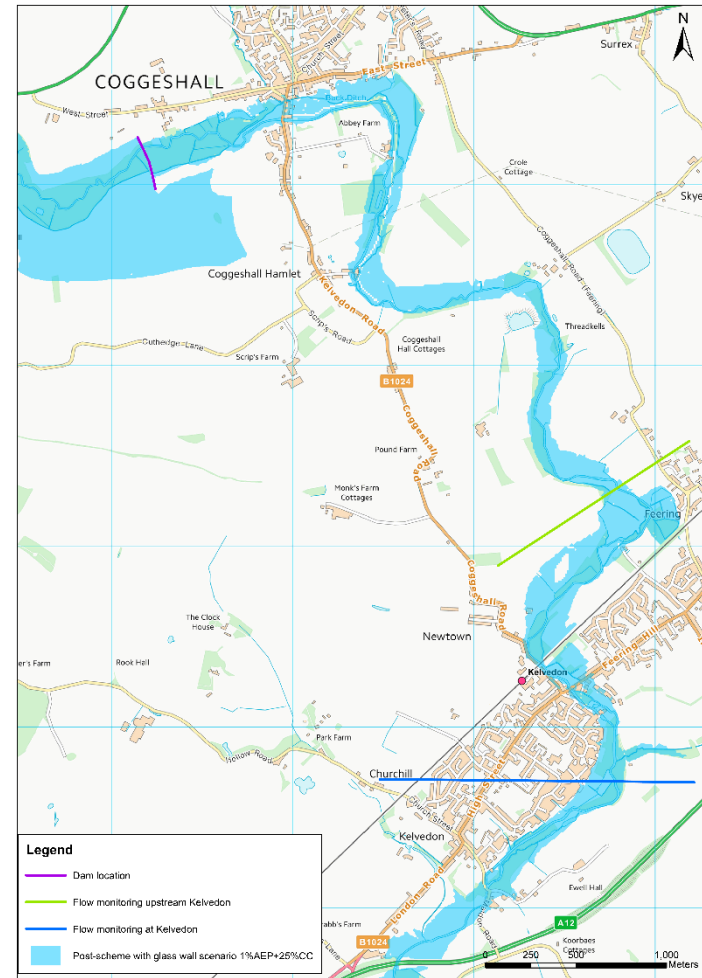
Flows are limited at the dam to allow water to pass through at a controlled rate, and use the natural downstream floodplain to protect properties from flood

The combined flood storage is over 3 Million m³

Bradwell flood levels are not affected by the scheme

Following a flood event, water will flow back into the river through the dam in a controlled manner due to the culvert

Climate change allowance have been included using a 25%



Modelled 1 in 100 Year Flood Event with the Scheme