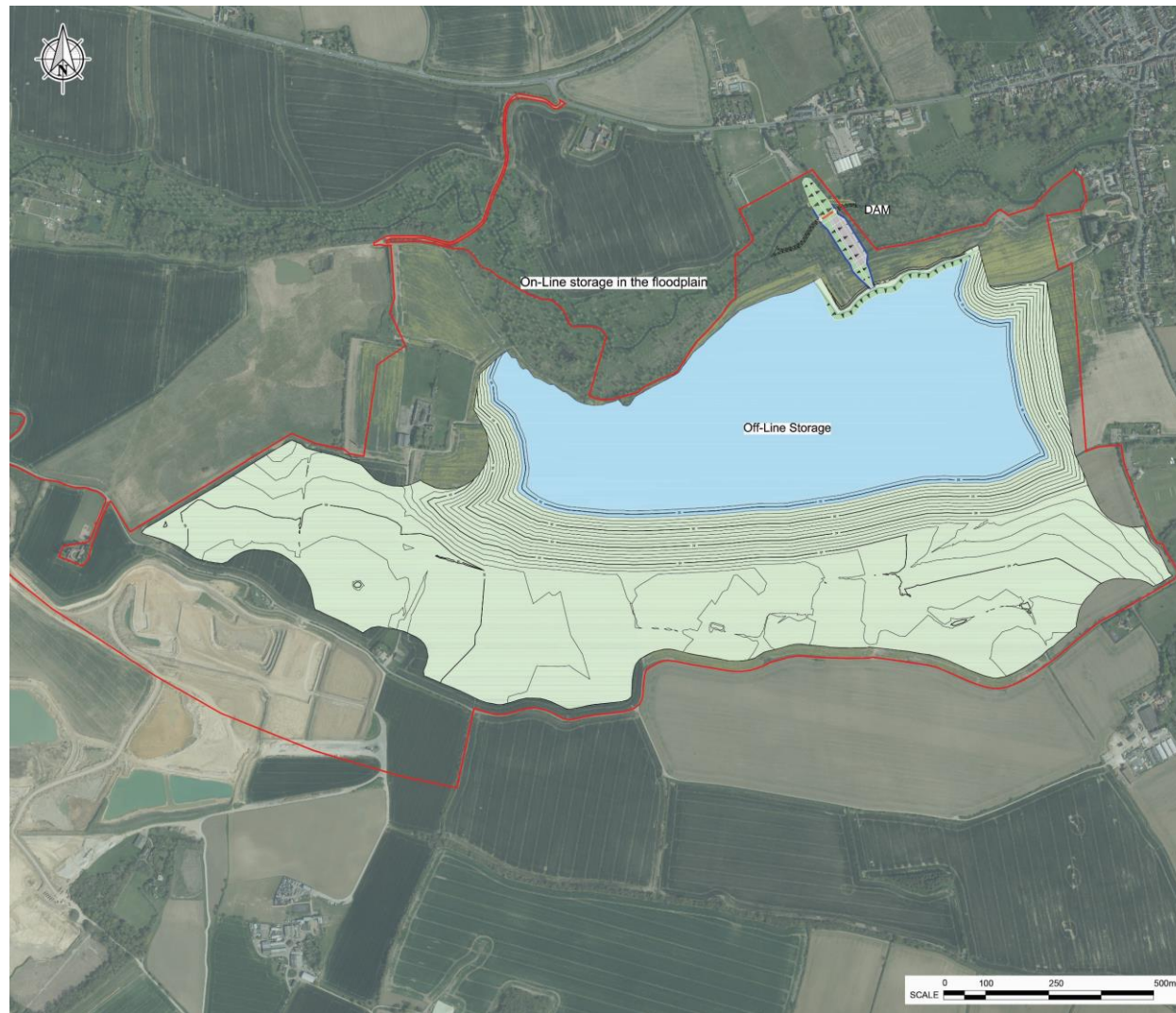


Coggeshall, Feering & Kelvedon Flood Alleviation Scheme

The Off-Line Flood Storage Area and Coggeshall Football Ground Dam



Legend

- Planning Application Boundary
- Area backfilled and restored
- Flood storage area

We are currently exploring options that could provide the flood storage which could include constructing an “on-line” embankment (or Dam) across the River Blackwater near the Coggeshall Football Ground and the creation of an “off-line” flood storage area next to the river.

This was an idea favoured by the communities at our last public drop-ins (July 2015).

The “off-line” flood storage area would be restored as a floodplain grassland which will incorporate habitat diversity.



Image of a Floodplain Grassland