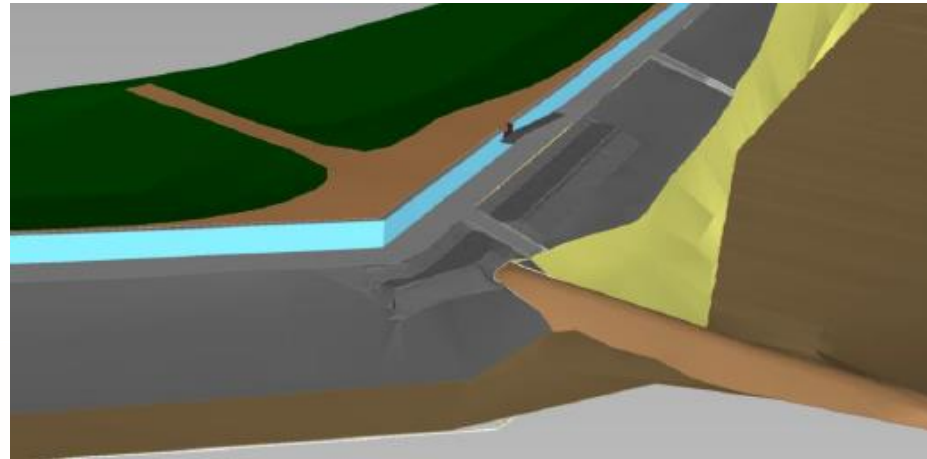


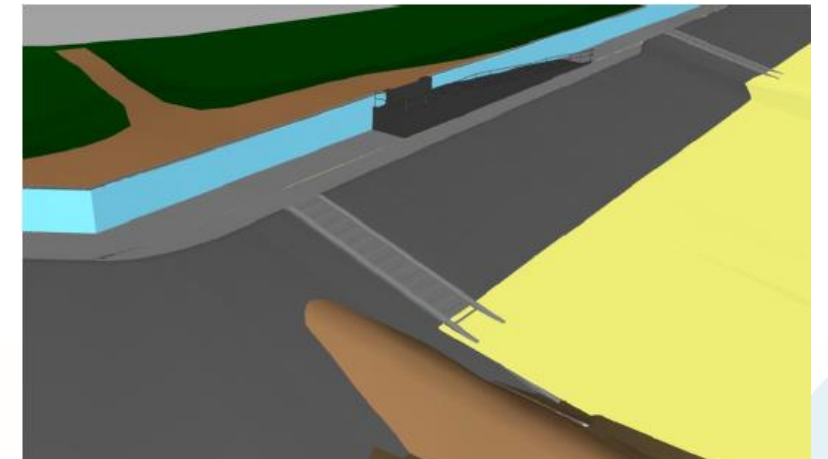
Key changes proposed by the scheme – Fisherman's Corner

We are enhancing Fisherman's Corner to improve access for all to enjoy the views across the estuary. We will do this by widening the existing seaward walkway, installing ramp access down to the seaward walkway as well as installing the new revetment at a shallower angle. This will be a key improvement as the current access to the existing viewing platform is via steps part-way down the revetment.

Existing arrangement at Fisherman's Corner



Proposed design at Fisherman's Corner



TEAM2100

Benefits to seafront users

Widening the maintenance access track

- Constructing an extended concrete paving slab.
- Passing places allow maintenance access along the existing frontage on the seaward side of the wall.
- Pedestrian access ramps and steps over the wall.
- A new passing place will be created in front of the Labworth Café.

Foreshore steps

- All foreshore steps to be replaced due to the shallower revetment angle.
- Location of some steps will be moved slightly to help pedestrian flow.
- Improve existing access to the beach and foreshore.
- New steps will also improve safety.

Maintenance Access Ramps

- Improved access for machines to the seaward maintenance track.
- improves future maintenance activities.
- construction of two access ramps.

Chapman Sands

- New ramps facing both east and west will be installed.
- The floodgate will also be widened

