

TEAM2100

Canvey Island - Southern Shoreline Revetment Project Newsletter

Issue 11: 16 November 2023

Welcome!



Welcome to the eleventh edition of the newsletter for the Canvey Island Southern Shoreline Revetment Project.

In this edition you can find out more about the progress made from site and about the site visits from Ray Howard MBE and local councillors. On page three you will find the planned working times for the project.

If you would like copies of future newsletter editions, please email: TEAM2100canveyrevetment@jacobs.com

Project updates

We are set to complete the work on eastern frontage of the island by the end of this year, including the landscaping. This area will be opened to the public once completed, with access to it through a floodgate. We anticipate that the area at Thorney Bay that is currently closed will be opened to the public in the new year.

For the latest project updates, see the webpage: <https://consult.environment-agency.gov.uk/east-anglia-c-e/canvey-southern-shoreline-project/>

Progress from site

Over the past month we have:

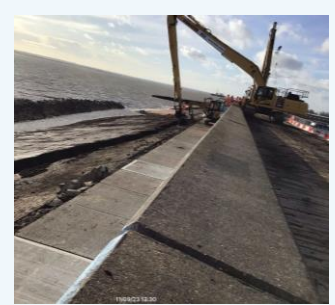
- Completed the installation of the piles at Fisherman's Corner in preparation for the construction of the new access ramp.
- Completed the installation of temporary access ramps at Fantasy Island and the Labworth.
- Worked on completing the placement of OSA/LSA at Leigh Beck and remobilising the team to Thorney Bay to complete works.
- Continued replacement of riverward side concrete maintenance access track slabs to remove potential trip hazards.
- Completed the construction of three number sets of precast concrete steps to provide improved foreshore access.



Thorney Bay steps installation



Maintenance access slab replacement at Fisherman's Corner



Work at Fisherman's Corner

In the coming month we will be:

- Placing OSA/LSA in front of the Labworth Café area.
- Constructing the ramp at Fisherman's Corner.
- Reopening the riverward frontage at the Eastern Frontage / Leigh Beck area.

Site visit from Ray Howard MBE

The project team recently welcomed Ray Howard MBE for a site visit. During the visit, Ray was shown the work that is taking place to maintain the existing high level of tidal flood risk protection to thousands of homes, businesses and infrastructure on Canvey Island. He also met with Mark Johnson, Area Coastal Manager at the Environment Agency. Ray, who is Honorary Alderman of Essex County Council and Freeman of The Borough of Castle Point Borough Council, said: "Thank you so much. I was impressed with the work that the team is doing."



Keeping you across the latest developments from the project

Thank you to everyone who attended the information drop-in last week at Starr Sports.

The event was well-attended and gave visitors the chance to find out the latest about the project and to ask the project team questions. One highlight was the wave tank that can be seen in the photograph on the far right. This tank allowed visitors to observe the impact that changing the angle of revetment has on the size and energy of the waves. Thank you to Starr Sports for hosting us. We will be holding further events next year.

From January 2024, the surgery we hold at Sue's Café, Furtherwick Road, will be held monthly rather than weekly. This is in your response to your feedback and the attendance numbers. Further details to follow in the next newsletter.



Children's artwork now displayed on site hoarding



We tasked children at Leigh Beck Infant School, Leigh Beck Nursery and Leigh Beck Junior School to produce pieces of artwork about Canvey Island. The results can now be seen on the site hoarding at Eastern Esplanade, opposite Leigh Beck children's play area.

We received some really impressive entries. Thank you to everyone who took part. The hoarding will remain until the end of the project.

Sustainability spotlight: Low emissions machinery

The project is using a number of innovative and sustainable solutions to deliver the works.

This includes low emissions machinery to ensure that the site is compliant with emissions levels by the remote monitoring of noise, dust and vibration.

Machinery used on site at Canvey is compliant with the 'EU IV' and 'EU V' standards. These standards regulate vehicle emissions and their impact on the environment.



Low emissions machinery

Councillors shown the latest progress from site

We recently had the pleasure of hosting two site visits to show several Castle Point Borough Councillors, who represent various wards across the island, the latest progress of the revetment works.

The visit included a brief presentation to recap the development and need for the scheme before donning Personal Protective Equipment to then head out to site. They visited Fisherman's Corner to see progress made installing piling for the new access ramp, installation of new foreshore steps as well as the new open stone asphalt itself. All attendees were very supportive of the works and were pleased to see the progress made.



Planned working hours

Please find below the planned working hours, locations and the compounds used. This will also involve operations on the landward side of the defence to support movement of materials. **Key: NCH** - Normal Construction Hours (08:00 to 18:00), **NWD** - Non Working Day (Weekends and Bank Holidays), **SC1 - Satellite Compound 1**, Fisherman's Corner, Western Esplanade, SS8 0AY, **Main Compound** - Adjacent 287 Eastern Esplanade, SS8 7PQ, **SC4 - Satellite Compound 4**, B17 Memorial Ground, Beveland Road, SS8 7QT.

Day	Date	Extended working hours	Compounds Used during extended hours	Work Types to be carried out during extended hours	Project phase involved in extended hours
Monday	20/11/2023	From 06:00	SC1, SC2, Main Compound, SC4	N/A	Thorney Bay, Labworth Cafe, Leigh Beck
Tuesday	21/11/2023	Till 22:00	SC1, SC2, Main Compound, SC4	Revetment	Thorney Bay, Labworth Cafe, Leigh Beck
Wednesday	22/11/2023	Till 22:00	SC1, SC2, Main Compound, SC4	Revetment	Thorney Bay, Labworth Cafe, Leigh Beck
Thursday	23/11/2023	Till 22:00	SC1, SC2, Main Compound, SC4	Revetment	Thorney Bay, Labworth Cafe, Leigh Beck
Friday	24/11/2023	Till 22:00	SC1, SC2, Main Compound, SC4	Revetment	Thorney Bay, Labworth Cafe, Leigh Beck
Saturday	25/11/2023	NWD	N/A	N/A	N/A
Sunday	26/11/2023	NWD	N/A	N/A	N/A
Monday	27/11/2023	From 06:00	SC1, SC2, Main Compound, SC4	Revetment	Thorney Bay, Labworth Cafe, Leigh Beck
Tuesday	28/11/2023	From 06:00	SC1, SC2, Main Compound, SC4	Revetment	Thorney Bay, Labworth Cafe, Leigh Beck
Wednesday	29/11/2023	From 06:00	SC1, SC2, Main Compound, SC4	Revetment	Thorney Bay, Labworth Cafe, Leigh Beck
Thursday	30/11/2023	From 06:00	SC1, SC2, Main Compound, SC4	Revetment	Thorney Bay, Labworth Cafe, Leigh Beck
Friday	01/12/2023	From 06:00	SC1, SC2, Main Compound, SC4	Revetment	Thorney Bay, Labworth Cafe, Leigh Beck
Saturday	02/12/2023	NWD	N/A	N/A	N/A
Sunday	03/12/2023	NWD	N/A	N/A	N/A
Monday	04/12/2023	From 06:00	SC1, SC2, Main Compound, SC4	Revetment	Thorney Bay, Labworth Cafe, Chapman Sands, Leigh Beck
Tuesday	05/12/2023	From 06:00	SC1, SC2, Main Compound, SC4	Revetment	Thorney Bay, Labworth Cafe, Chapman Sands, Leigh Beck
Wednesday	06/12/2023	Till 22:00	SC1, SC2, Main Compound, SC4	Revetment	Thorney Bay, Labworth Cafe, Chapman Sands, Leigh Beck
Thursday	07/12/2023	Till 22:00	SC1, SC2, Main Compound, SC4	Revetment	Thorney Bay, Labworth Cafe, Chapman Sands, Leigh Beck
Friday	08/12/2023	Till 22:00	SC1, SC2, Main Compound, SC4	Revetment	Thorney Bay, Labworth Cafe, Chapman Sands, Leigh Beck
Saturday	09/12/2023	NWD	N/A	N/A	N/A
Sunday	10/12/2023	NWD	N/A	N/A	N/A
Monday	11/12/2023	From 06:00	SC1, SC2, Main Compound, SC4	Revetment	Thorney Bay, Labworth Cafe, Chapman Sands, Leigh Beck
Tuesday	12/12/2023	From 06:00	SC1, SC2, Main Compound, SC4	Revetment	Thorney Bay, Labworth Cafe, Chapman Sands, Leigh Beck
Wednesday	13/12/2023	From 06:00	SC1, SC2, Main Compound, SC4	Revetment	Thorney Bay, Labworth Cafe, Chapman Sands, Leigh Beck
Thursday	14/12/2023	From 06:00	SC1, SC2, Main Compound, SC4	Revetment	Thorney Bay, Labworth Cafe, Chapman Sands, Leigh Beck
Friday	15/12/2023	From 06:00	SC1, SC2, Main Compound, SC4	Revetment	Thorney Bay, Labworth Cafe, Chapman Sands, Leigh Beck
Saturday	16/12/2023	NWD	N/A	N/A	N/A