

TEAM2100

Canvey Island - Southern Shoreline Revetment Project Newsletter

Issue 3: 16 February 2023

Welcome!



A warm welcome to the third edition of the newsletter for the Canvey Island Southern Shoreline Revetment Project.

In the edition we cover the footpath closure at Fisherman's Corner, what we have been working in the past few weeks and our community surgeries.

We also let you know where you can find a fly-through animation, where satellite compound 4 will be located, and how we have been responding to your feedback on the project.

We hope that you enjoy this new edition.

If you would like to receive a copy of future editions of this newsletter, please contact us at the email address below and we will send you a copy:

TEAM2100canveyrevetment@jacobs.com

Progress from site

Since our last newsletter we have worked on the following:

- Installing temporary drainage within site compounds.
- Carrying out temporary connections to the main supply for electricity, foul water, clean water and fibre internet.
- Solid hoarding on the main compound is being installed.



Main compound

Our key upcoming work for March will include:

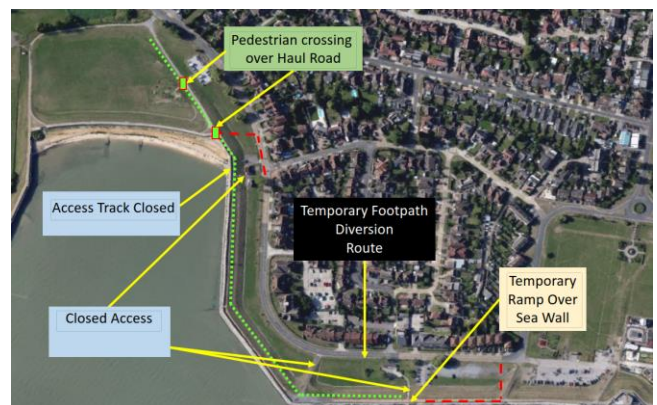
- Preparations for satellite compound 4 (see overleaf).
- Cabins will be installed at the main compound.
- Work will begin on Lower Haul Road.
- Test pile works commencing on Fisherman's Corner.

Fisherman's Corner footpath closure

We will need to close the ramp and footpaths at Fisherman's Corner from the 20th February 2023 for 12 months.

We need to close the footpath as we are going to be using machinery to install a single concrete test pile and the temporary haul road and ramps to allow us to construct the replacement riverside revetment.

We have installed signage to indicate alternative pedestrian routes. The nearest accessible footpath can be found on the pavement at the Western Esplanade.



Community surgeries

Thank you to all those who have so far attended the surgeries hosted by our Community Manager, Param Kaur-Kingston.

The surgeries take place between 11am-1pm on Tuesdays and Wednesdays and give you the chance to ask questions that you have about the project.

We are using Sue's Café on Furtherwick Road as an interim location while we prepare a permanent premises.

You can contact Param using the following details:

TEAM2100Canveyrevetment@Jacobs.com



Acting on your feedback

Since starting on site you have been providing us with helpful feedback on the project.

Some of the recent actions we have taken as a result of your feedback are below:

- We are committed to installing larger 5mph signage on approach to the Eastern Esplanade from Seaview Road. This will make it easier to be seen and followed by drivers of HGVs.
- As part of the preparations for the works, we have removed the benches that were on the grassed area on the main compound. We are working closely with Castle Point Borough Council to identify where we can relocate some of this seating. We will keep you updated.
- We've flagged the highway defect on Eastern Esplanade with Essex County Council Highways and are seeking a collaborative solution to resolve the matter.

If you have any questions or comments regarding the project, please feel free to contact us at:

TEAM2100canveyrevetment@jacobs.com

Fly-through animation

Our project website now features a computer simulated representation of the key features of the works. The fly-through compares the existing site at certain locations along the shoreline. You can view the animation at:

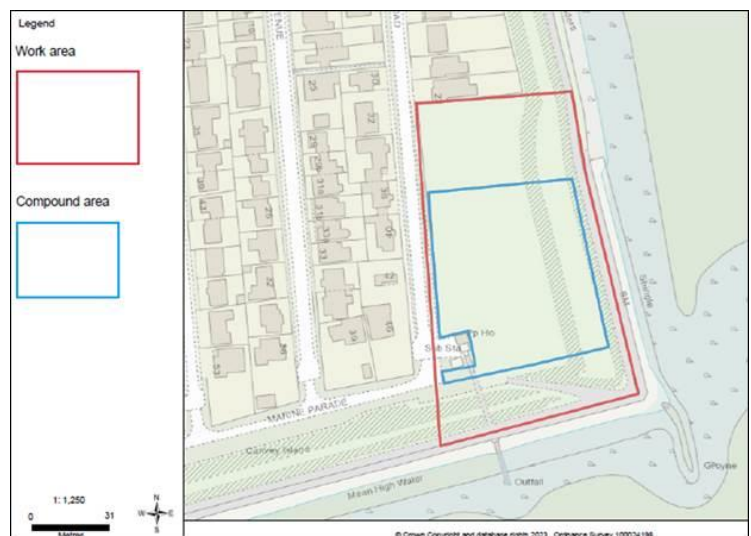
<https://consult.environment-agency.gov.uk/east-anglia-c/canvey-southern-shoreline-project/>

Satellite compound 4

In the coming weeks we will begin installing satellite compound 4. The compound can be seen in the diagram on right. It will be based on the grassed area to the east of Beveland Road.

This compound is vital to help install the new revetment at Leigh Beck Point. It will be linked to the main compound at the end of Eastern Esplanade via a purpose-built temporary haul road. This will help remove plant movements from the local roads.

We are aware that the compound is located on the B17 Memorial Ground. Due to the importance of the memorial plaque on Beveland Road, we have ensured families associated with the memorial have been informed. All commemorative benches and information boards will be temporarily moved off-site into secure storage until the compound is removed later in the year.



Satellite compound 4