

Jameson Road Landfill Site Community Update

Since our last update of 9 April we have received more reports from members of the community around Fleetwood:

Month	Number of reports	Types of report
January	5	Odour
February	75	Mainly Odour
March	1379	Mainly Odour
April (to date)	930	Mainly Odour

Ongoing Situation

We continue to monitor and perform our regulatory duties at the Jameson Road Landfill site in Fleetwood. As outlined in detail in our previous updates, below is a brief timeline of the actions* we have taken so far:

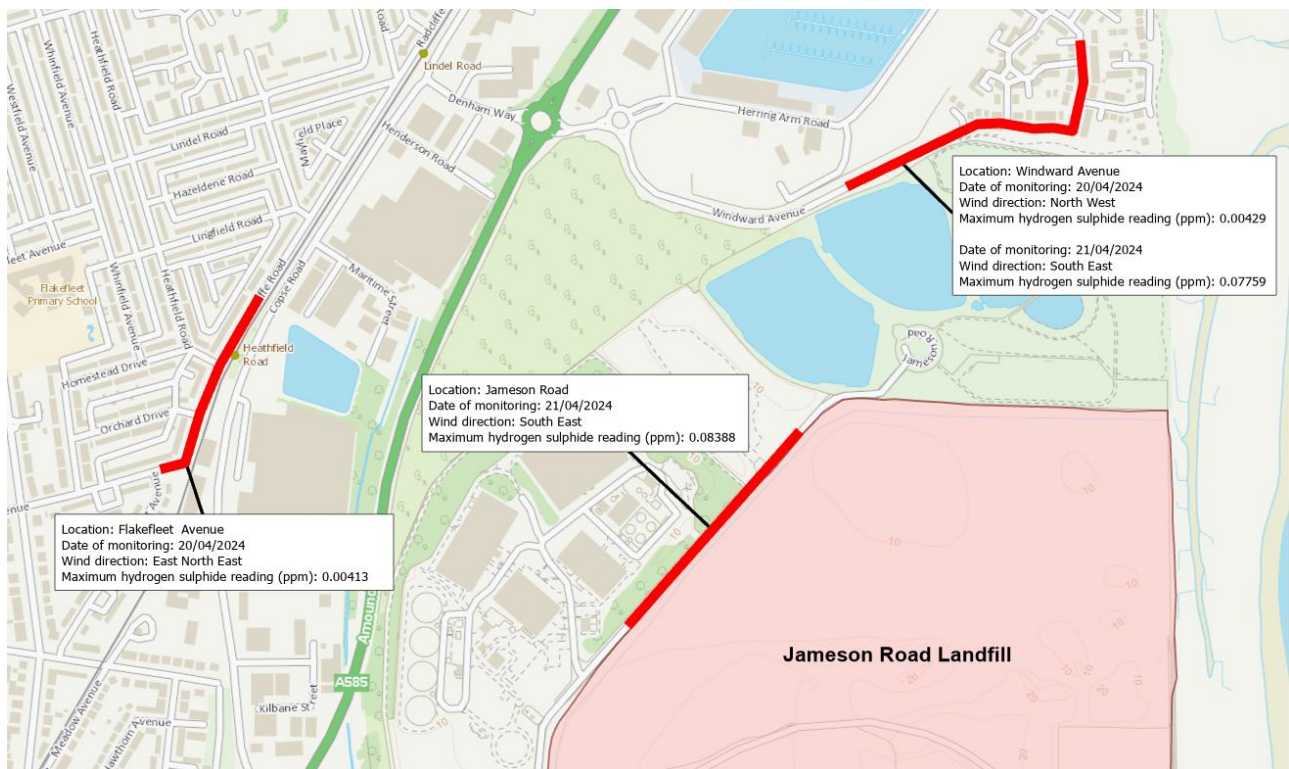
- **5 Feb** - Environment Agency visited the site and identified concerns. A letter was sent to Transwaste outlining these concerns.
- **20 Feb** - EA meeting with Transwaste senior managers to seek assurance that activity will be better controlled. Measures to minimise the impact made clear to Transwaste.
- **26 Feb** - EA Officers increase compliance activity on and off the Jameson Road site. Odour checking carried out regularly within the community.
- **4 March** - Odour run frequency increased to daily. Drone deployed for monitoring purposes.
- **18 March** - Enforcement Notice issued to stop use of tipping bay. A copy of this is on the dedicated [Jameson Road website](#)
- **20 March** - Transwaste complied with the terms of the above notice issued on 18 March
- **28 March** - Work to install 6 new Gas wells and infrastructure was completed.
- **9 April** - Regulatory Enforcement Notice served that directing Transwaste to cover the problematic area of the landfill site by 15 May. A copy of this can be found on the [Jameson Road website](#).

**Please note that due to legal reasons we are unable to provide all the details of the visits and our findings at present but will as soon as we are able.*

Hydrogen Sulphide Monitoring

We have been carrying out hydrogen sulphide monitoring in the areas around the landfill. This is done using a handheld monitor that takes instant readings of the air. Our officers identify plumes of malodorous air based on wind direction, reports to our incident hotline, and from our own odour assessments. We then walk through the plume taking several measurements.

The map below shows the date and location of where the monitoring was carried out:



We have shared the results with our partners at UK Health Security Agency and Wyre Borough Council. The results show levels of hydrogen sulphide above normal background levels.

The results show that hydrogen sulphide levels are above the level of detection to the human nose but are low. They are also transient. We are advised that the results do not change the health advice previously given. The current health advice can be found at the end of this update.

Monitoring

We have narrowed down two locations to place a Mobile Monitoring Facility (MMF) within the community. The MMF monitors different substances - Methane, Hydrogen Sulphide and particulates (dust). We hope to have the facility in place within the next 7 days and will update on this soon.

We have national monitoring experts who install and maintain the equipment. They will work with the local team to find an appropriate site with the right security and power supply.

We will use the data gathered to provide assurance that the control measures and actions taken by the landfill operator are effective. This is not a process that provides instant real-time data and takes place over a period of time. We will share the monitoring reports and information with our partners and the community as soon as we can.

Enforcement actions

We said in our last update that we had served an Enforcement notice to stop tipping activity that was causing odour. Transwaste subsequently complied with that notice.

On 9 April we served a regulatory enforcement notice directing Transwaste to cover the problematic area of the landfill site. The notice stipulates that the cover needs to be in place and fully functional by 15 May 2024.

During our regular site visits and with the use of our drone, we are monitoring the progress of this work to ensure that Transwaste are progressing actions and are on track to have this work completed on time.

If Transwaste fail to comply with the enforcement notice, then we will consider appropriate escalation using enforcement action in line with our [Enforcement and Sanction Policy](#).

Multi-Agency Working

We continue to work with partner organisations, Wyre Borough Council, Lancashire County Council and the UK Health Security Agency.

Each organisation has a different role in providing advice or regulating under specific legislation for the Jameson Road landfill site. Please see our [dedicated webpage](#) for details of each organisation and their responsibilities.

Leachate

Leachate is a liquid produced as waste breaks down within the landfill, it collects at the engineered base of the landfill where it is collected and then pumped to treatment tanks before being discharged to sewer. This activity is monitored through permit conditions and forms part of our regulatory checks.

Members of the public have told us they are concerned about leachate escaping from the site. There is no evidence of leachate escaping the site boundary. We are addressing leachate management with Transwaste and this will form part of our ongoing regulation.

Surface Water Management

Transwaste are constructing new landfill 'cells' on site. These are in preparation for new areas of the landfill that must be engineered to modern standards before they can accept waste. There are Construction Quality Assurance (CQA) standards that must be met that are required through conditions within the Environmental Permit. A copy of this permit is available on the webpage.

We have received reports from members of the public of silt contaminated water leaving the landfill site and entering the River Wyre. We have raised this with Transwaste and

directed them to monitor and prevent any escape of mud/silts as part of their surface water management at the site. We will keep this under review.

Operating Hours

We have received a number of complaints from residents in regard to vehicles entering the site out of the permitted hours of operation. Operational hours are controlled by the planning permission issued by Lancashire County Council.

We understand that Landfilling Operations are restricted to:

- 7:30am to 5:30pm Monday to Friday
- 8am to 1 pm Saturdays
- No landfilling on Sundays

Note these are operational hours for 'landfilling activities' only. Lancashire County Council Planners are aware of concerns from residents on operating hours.

How are we keeping the community updated?

We continue to regularly update our dedicated web page to keep the community informed. All previous updates in relation the current situation are available here:

[Information on Jameson Road Landfill Site, Fleetwood, Lancashire - Environment Agency - Citizen Space \(environment-agency.gov.uk\)](https://www.environment-agency.gov.uk/citizen-space/landfilling-activities-at-jameson-road-landfill-site-fleetwood-lancashire)

We will continue to provide these updates as the situation changes. If you would like to be added to the mailing list to receive them directly then please send an email to:

engagement.cmbinc@environment-agency.gov.uk.

Reporting the odour

Reporting helps us to build up a picture of the extent and impact of the odour issue within the community. We encourage people to report to us on our 24-hour incident hotline:

0800 80 70 60

Current health advice from UK HSA

We are aware of symptoms reported within the community. These include reports of strong odours and transient health effects, such as eye and respiratory irritation. The human nose is very sensitive. Strong odours are unpleasant and can impact on wellbeing, leading to stress and anxiety. Some people may experience physical symptoms, such as nausea, headaches or dizziness, as a reaction to strong odours, even when the substances that cause those odours are not at concentrations that are directly harmful to health.

What can I smell?

The odour pollution from landfill sites falls into two broad categories:

- The first is the waste odour, which is caused by fresh waste rapidly decomposing and tends to come from vehicles travelling to and from the site and whilst it is tipped. This is similar to the odours that are contained within a domestic bin. It poses little risk to human health and can be tackled by depositing the waste quickly and covering it with soils called “daily cover”.
- The second type of odour is landfill gas. This is gas generated by the breakdown of the waste inside the body of the landfill site. Landfill gas is mostly methane and carbon dioxide, which are odourless and colourless. However, landfill gas also contains trace components such as hydrogen sulphide that, even in very small quantities, has a strong smell of rotten eggs, which the human body is very sensitive to. Although the smell caused by the trace levels of hydrogen sulphide gas can be strong and unpleasant, it does not automatically mean that it is harmful. Our sense of smell is very sensitive and we can smell hydrogen sulphide at very low levels.

Are the smells causing or going to cause health effects?

The human nose is very sensitive. Many things have a strong smell at levels at which there are no direct harmful effects to health. However, strong smells are unpleasant and can impact on wellbeing leading to stress and anxiety. Some people may also experience symptoms, such as nausea, headaches or dizziness, as a reaction to strong smells, even when the substances that cause those smells are themselves not harmful to health.

Following exposure to any substance, the adverse health effects depend on several factors, including the amount to which you are exposed (dose), the way in which you are exposed, the duration of exposure, the form of the chemical and if you were exposed to any other chemicals. The first noticeable effect of hydrogen sulphide at very low concentrations is its unpleasant odour, which may cause discomfort and some short-term health effects (as described in the paragraph above). At higher concentrations, it may cause eye, nose and throat irritation. It may also disturb sleep if experienced at night at low levels.

What should I do if I am concerned about my symptoms?

If you are concerned about your symptoms, contact your GP or call NHS 111.

What can I do to reduce my risk?

Individuals can close doors and windows whilst the smell is present and then open them to vent the smell from the premises when the smell has cleared.

What symptoms may I experience as a result of odour?

Short-term transient health effects may be experienced such as irritation to the eyes, nose and throat. People who have health conditions that affect breathing, such as asthma, may experience increased frequency and/or severity of symptoms.

With continuing exposure, these effects may be prolonged but are not anticipated to continue long-term once exposure is reduced.

What can I do to reduce symptoms caused by odour?

To limit the effects of the odour as much as possible, we would advise:

- Close windows if there is an outdoor odour and open them once any outdoor odour has reduced.
- You could consider closing windows at night and opening them in the morning in the absence of odour.
- Ventilate your property when there is no odour outdoors.
- Contact NHS 111 or your GP if you have concerns about your individual circumstances and require health advice.

What is being done to understand the potential health impact of the odour on local residents, and how long will this take?

In the case of individual sites, the Environment Agency carefully monitors the performance of a landfill site using a wide range of parameters including groundwater, surface water and air monitoring, pollution reports, the operator's own monitoring and even aerial photography.

We use all these parameters to determine the performance of the site and if we have concerns, we require the operator of the site to take steps to resolve them, promptly.

If the operator of the permitted site does not respond to our concerns, we can carry out our own check monitoring and use a range of enforcement notices to force the operator of the site to take action.